



***World Agricultural Supply and  
Demand Estimates***

Report of March 8, 2019

***Interagency Commodity Estimates Committee Forecasts***

World Agricultural Outlook Board, Chairing Agency

Economic Research Service

Foreign Agricultural Service

Farm Service Agency

Agricultural Marketing Service



# World Wheat Production

Country or Region	2017/2018 estimate	2018/2019 forecast	Change from February 8	Change from 2017/2018
----- Million Tons -----				
World	763.1	733.0	-1.7	-30.1
United States	47.4	51.3	--	3.9
Foreign	715.7	681.7	-1.7	-34.0
Argentina	18.5	19.5	0.3	1.0
Canada	30.0	31.8	--	1.8
Australia	21.3	17.3	0.3	-4.0
European Union	151.3	137.6	--	-13.7
Turkey	21.0	19.0	--	-2.0
Russia	85.0	71.7	0.1	-13.3
Ukraine	27.0	25.0	--	-2.0
Kazakhstan	14.8	13.9	-1.1	-0.9
China	134.3	131.4	--	-2.9
India	98.5	99.7	--	1.2
Northwest Africa	10.6	12.4	-0.2	1.8

-- No change.

# World Wheat Supply and Use

Item	2017/2018 estimate	2018/2019 forecast	Change from February 8	Change from 2017/2018
----- Million Tons -----				
Beginning stocks	260.9	279.6	-0.4	18.7
Production	763.1	733.0	-1.7	-30.1
Total Supply	1,024.0	1,012.6	-2.1	-11.4
Feed use	147.9	142.1	-1.1	-5.8
Total use	744.4	742.1	-5.1	-2.3
Trade	181.2	178.9	0.2	-2.3
Ending Stocks	279.6	270.5	3.0	-9.1

# U.S. Wheat Supply and Demand

Item	2017/2018 estimate	2018/2019 forecast	Change from February 8	Change from 2017/2018
Planted area (million acres)	46.1	47.8	--	1.7
Harvested area (million acres)	37.6	39.6	--	2.1
Yield (bushels per acre)	46.4	47.6	--	1.2
<i>----- Million bushels -----</i>				
Beginning stocks	1,181	1,099	--	-82
Production	1,741	1,884	--	144
Imports	157	145	5	-12
Total supply	3,079	3,128	5	49
Food use	964	965	-5	1
Seed	63	63	--	0
Feed and residual	51	80	--	29
Domestic use	1,079	1,108	-5	29
Exports	901	965	-35	64
Total use	1,980	2,073	-40	93
Ending stocks	1,099	1,055	45	-44
<i>----- Percent -----</i>				
Stocks to use ratio	55.5	50.9	3.1	-4.6
<i>----- Dollars per bushel -----</i>				
Average market price	4.72	5.10/5.20	--	0.43

-- No change.

# World Rice Production

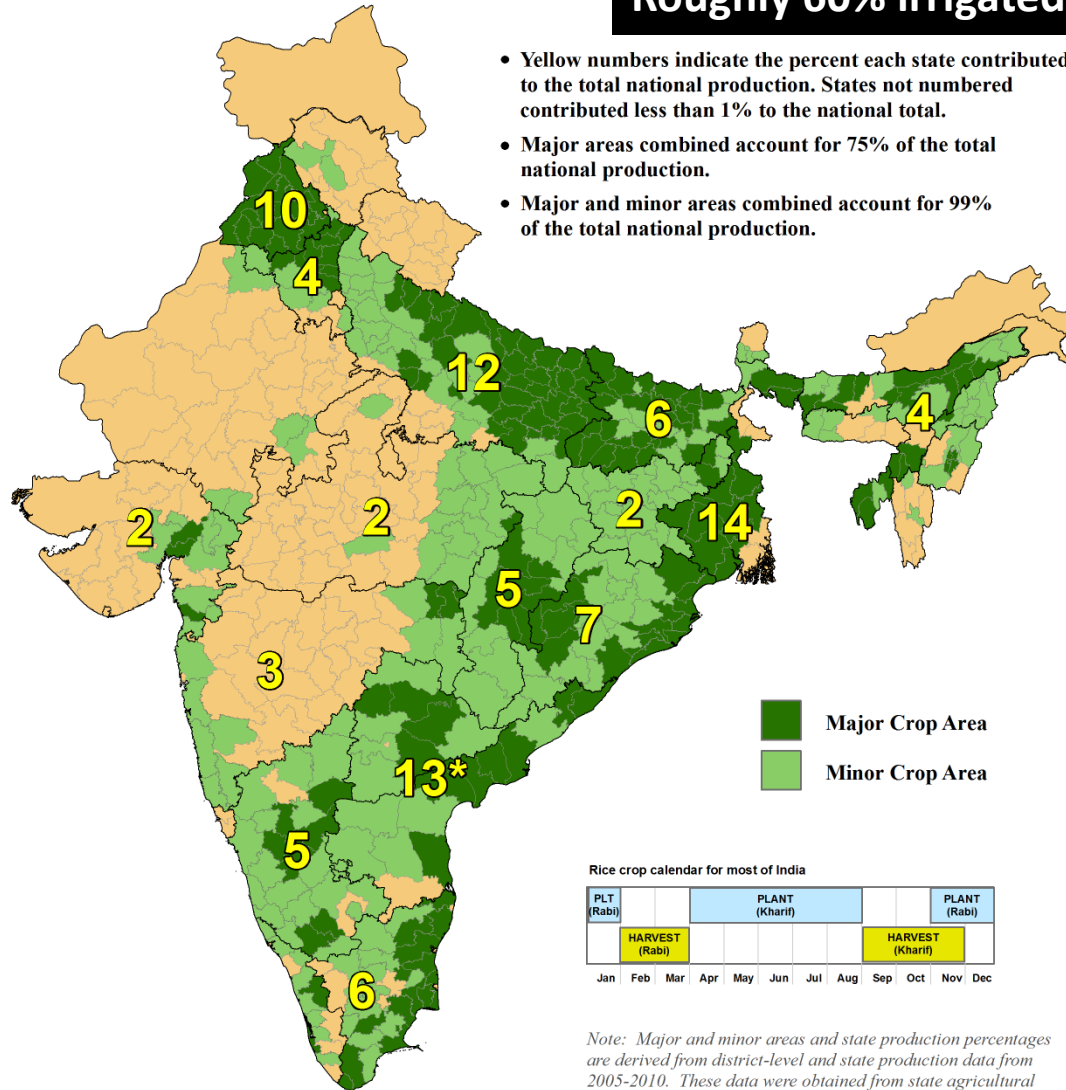
Country or Region	2017/2018 estimate	2018/2019 forecast	Change from February 8	Change from 2017/2018
----- Million Tons -----				
World	495.4	501.6	5.7	6.2
United States	5.7	7.1	--	1.5
Foreign	489.7	494.4	5.7	4.7
Argentina	0.9	0.8	--	-0.1
Brazil	8.2	7.5	-0.3	-0.7
Egypt	4.3	2.8	--	-1.5
Australia	0.45	0.08	**	-0.38
Bangladesh	32.7	35.0	0.5	2.4
Burma	13.2	13.1	--	-0.1
Cambodia	5.4	5.5	--	0.1
China	148.9	148.5	--	-0.4
India	112.9	116.0	5.0	3.1
Indonesia	37.0	37.3	--	0.3
Japan	7.8	7.7	--	-0.1
Sri Lanka	2.2	2.6	--	0.4
Pakistan	7.5	7.5	0.1	0.1
Philippines	12.2	12.2	--	-0.1
Thailand	20.4	20.7	--	0.3
Vietnam	28.5	29.1	--	0.6

-- No change. \*\* Rounds to zero.

# India: Rice

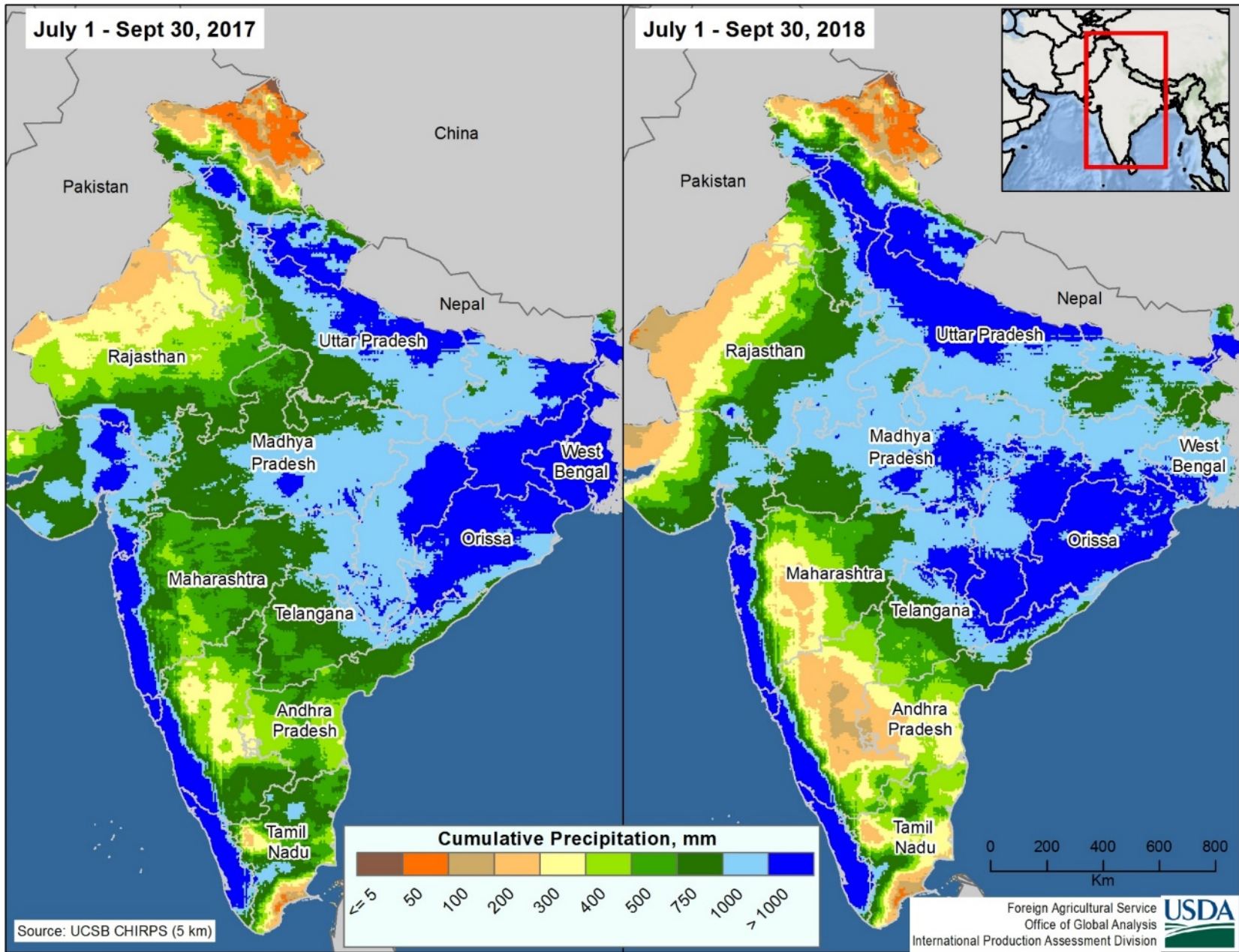
**Roughly 60% irrigated.**

- Yellow numbers indicate the percent each state contributed to the total national production. States not numbered contributed less than 1% to the national total.
- Major areas combined account for 75% of the total national production.
- Major and minor areas combined account for 99% of the total national production.



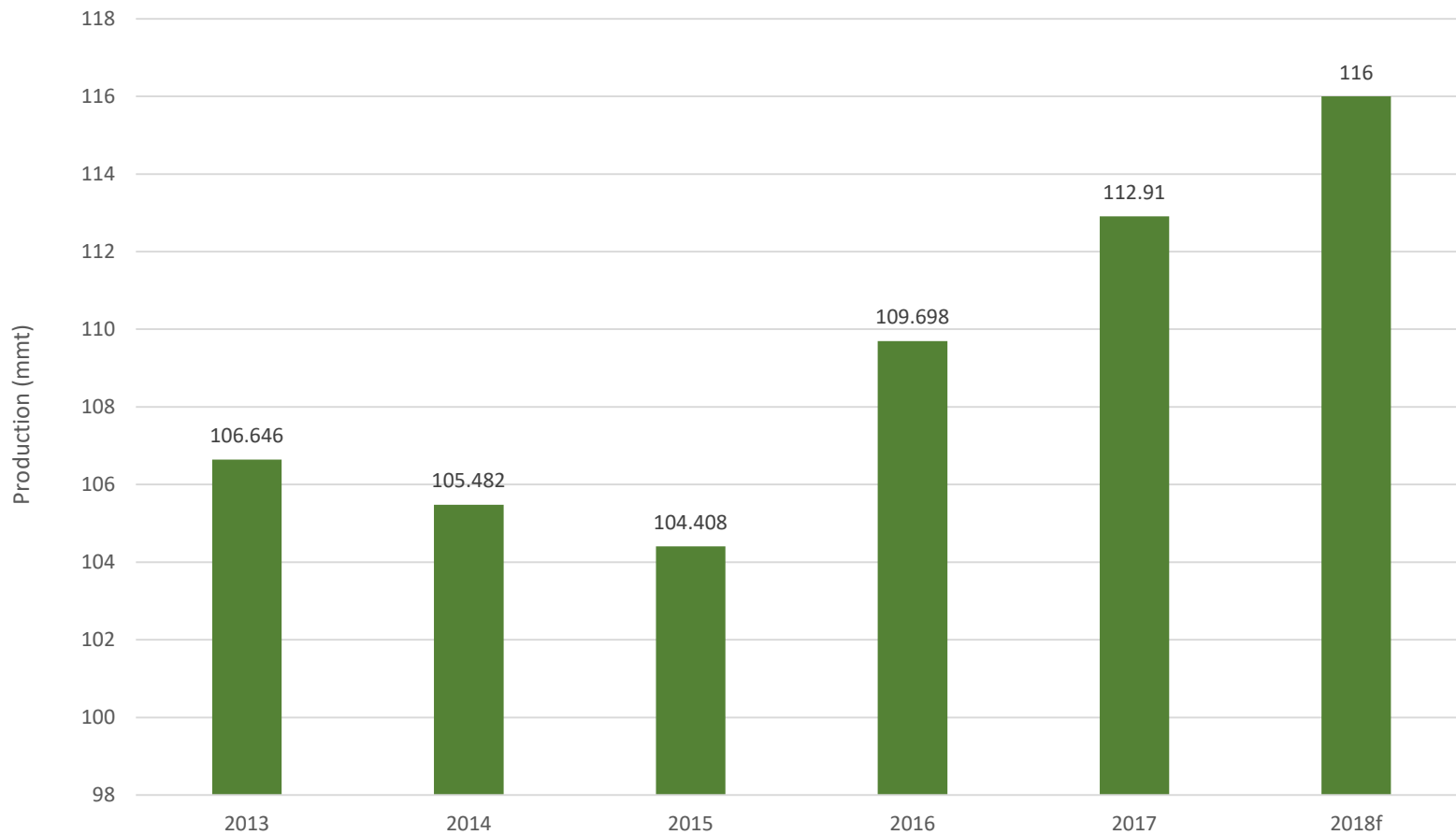
Note: Major and minor areas and state production percentages are derived from district-level and state production data from 2005-2010. These data were obtained from state agricultural departments.

\*Combined average for both Andhra Pradesh and Telangana.





# India 2018/19 Rice Production



# World Rice Supply and Use

Item	2017/2018 estimate	2018/2019 forecast	Change from February 8	Change from 2017/2018
<i>----- Million Tons -----</i>				
Beginning stocks	150.0	162.6	0.6	12.6
Production	495.4	501.6	5.7	6.2
Total Supply	645.3	664.2	6.3	18.8
Total use	482.7	492.0	1.7	9.2
Trade	47.1	47.4	-0.4	0.2
Ending Stocks	162.6	172.2	4.6	9.6

# U.S. Rice Supply and Demand

Item	2017/2018 estimate	2018/2019 forecast	Change from February 8	Change from 2017/2018
Planted area (million acres)	2.46	2.95	--	0.48
Harvested area (million acres)	2.37	2.92	--	0.54
Yield (pounds per acre)	7,507	7,692	--	185
<i>----- Million cwt -----</i>				
Beginning stocks	46.0	29.4	--	-16.7
Production	178.2	224.2	--	46.0
Imports	26.9	29.0	0.5	2.1
Total supply	251.2	282.6	0.5	31.4
Domestic use	134.8	135.0	--	0.2
Exports	87.0	98.0	-2.0	11.0
Total use	221.8	233.0	-2.0	11.2
Ending stocks	29.4	49.6	2.5	20.2
<i>----- Percent -----</i>				
Stocks to use ratio	13.2	21.3	1.2	8.0
<i>----- Dollars per cwt -----</i>				
Average market price	12.90	11.70/12.70	0.10	-0.70

-- No change.

# World Corn Production

Country or Region	2017/2018 estimate	2018/2019 forecast	Change from February 8	Change from 2017/2018
----- Million Tons -----				
World	1,076.2	1,101.2	1.6	24.9
United States	371.1	366.3	--	-4.8
Foreign	705.1	734.9	1.6	29.7
Argentina	32.0	46.0	--	14.0
Brazil	82.0	94.5	--	12.5
Mexico	27.5	25.6	--	-1.9
Canada	14.1	13.9	--	-0.2
European Union	62.1	60.9	0.2	-1.2
Serbia	4.0	7.0	--	3.0
FSU-12	42.2	52.1	0.3	9.9
Ukraine	24.1	35.5	--	11.4
Russia	13.2	11.4	0.2	-1.8
South Africa	13.1	11.0	-0.5	-2.1
China	259.1	257.3	--	-1.7
India	28.7	27.8	1.8	-0.9

-- No change.

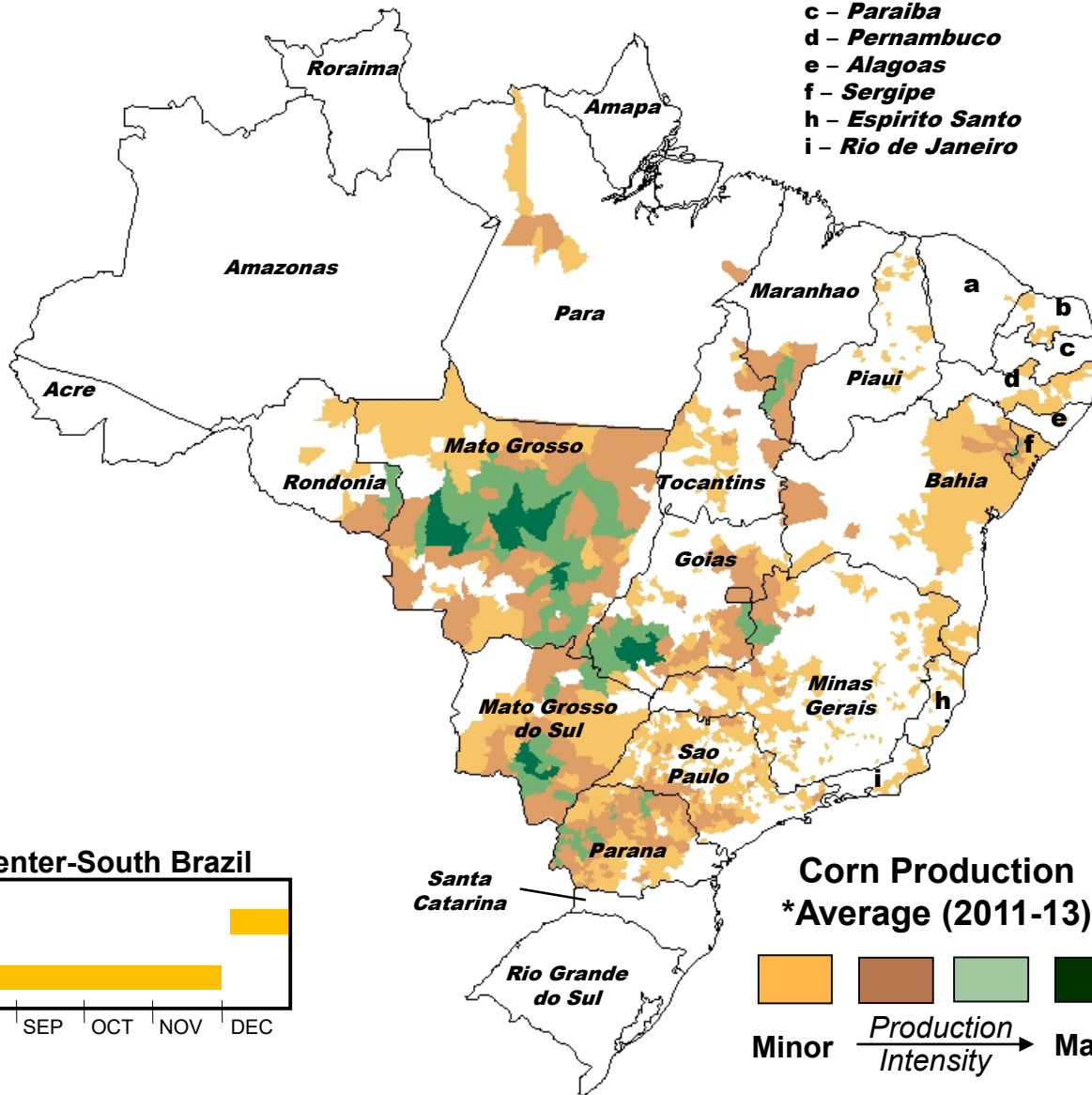
# Brazil Corn (Second Crop)

- a - *Ceara*
- b - *Rio Grande do Norte*
- c - *Paraiba*
- d - *Pernambuco*
- e - *Alagoas*
- f - *Sergipe*
- h - *Espirito Santo*
- i - *Rio de Janeiro*

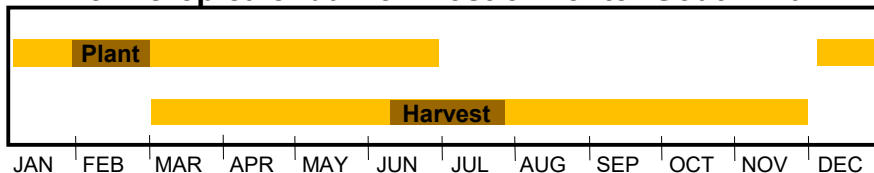
## \* State-Level Production (as % of total)

Mato Grosso	39
Parana	25
Mato Grosso do Sul	15
Goias	12
Sao Paulo	3
Minas Gerais	1
Sergipe	1
Bahia	1
Maranhao	1
Rondonia	1
Other States	~1

\* 2011 to 2013 Average  
Source: IBGE Brazil



## 2nd Corn crop calendar for most of Center-South Brazil

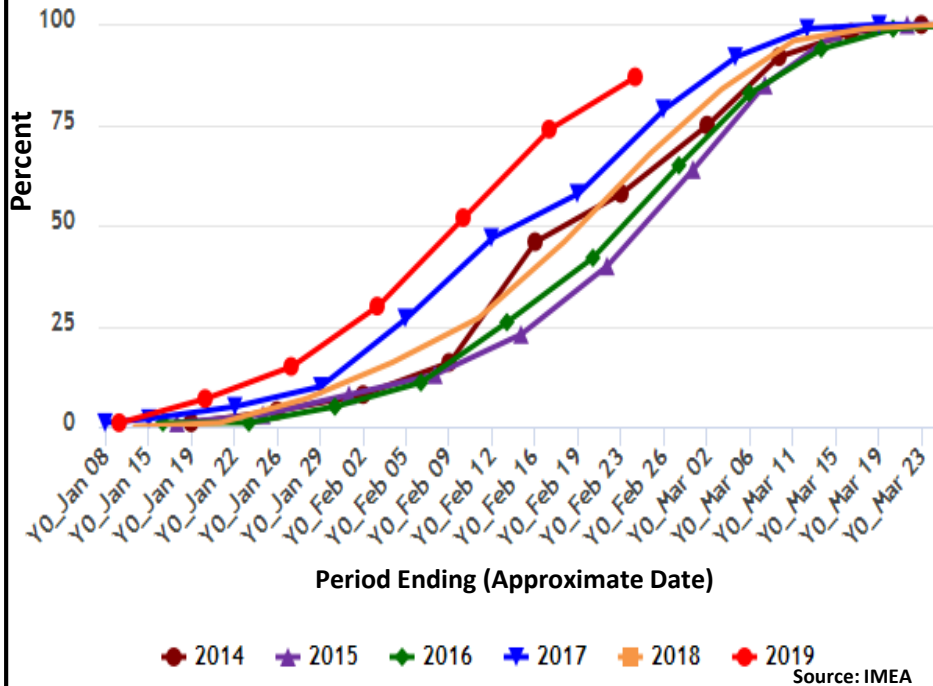


## Corn Production \*Average (2011-13)



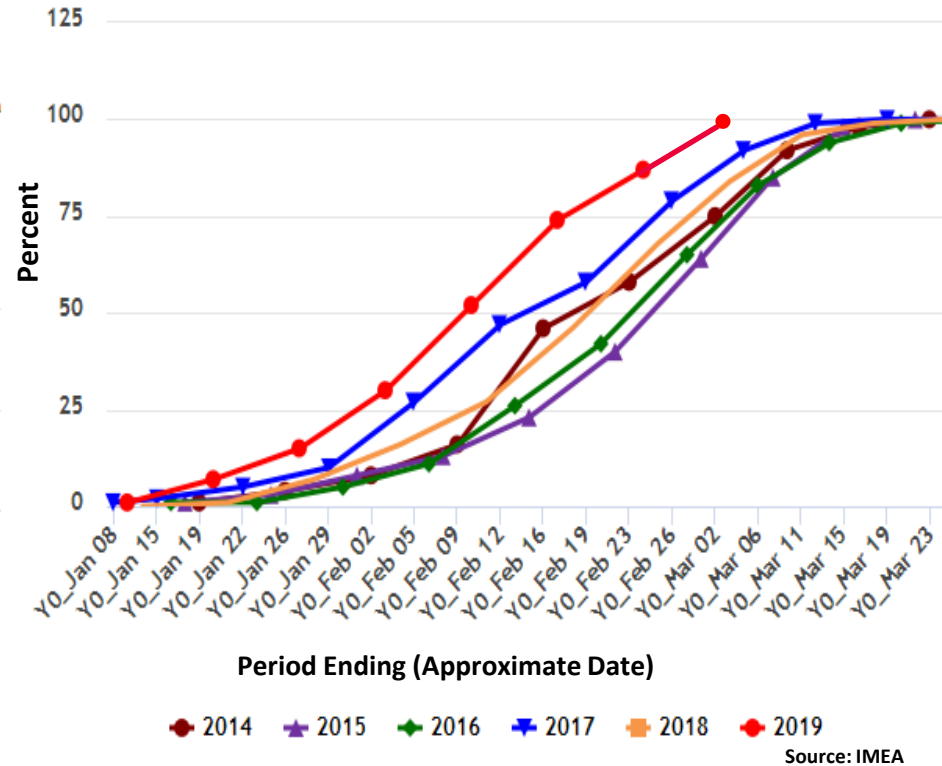
\*Source: IBGE

# Mato Grosso Soybeans Percent Harvested



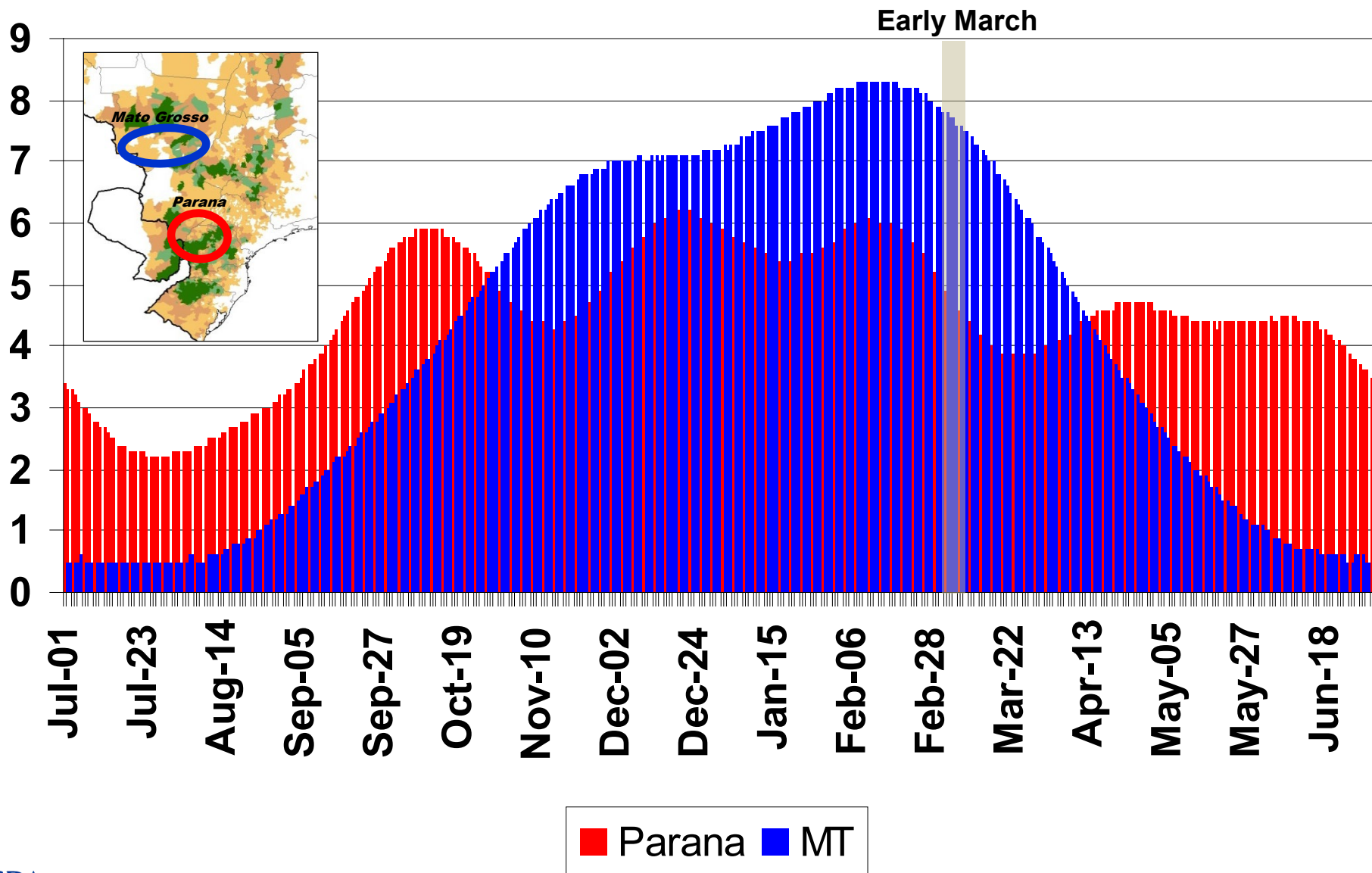
**Rapid soybean harvest allowed for early planting of corn in Mato Grosso.**

# Mato Grosso Corn Percent Planted

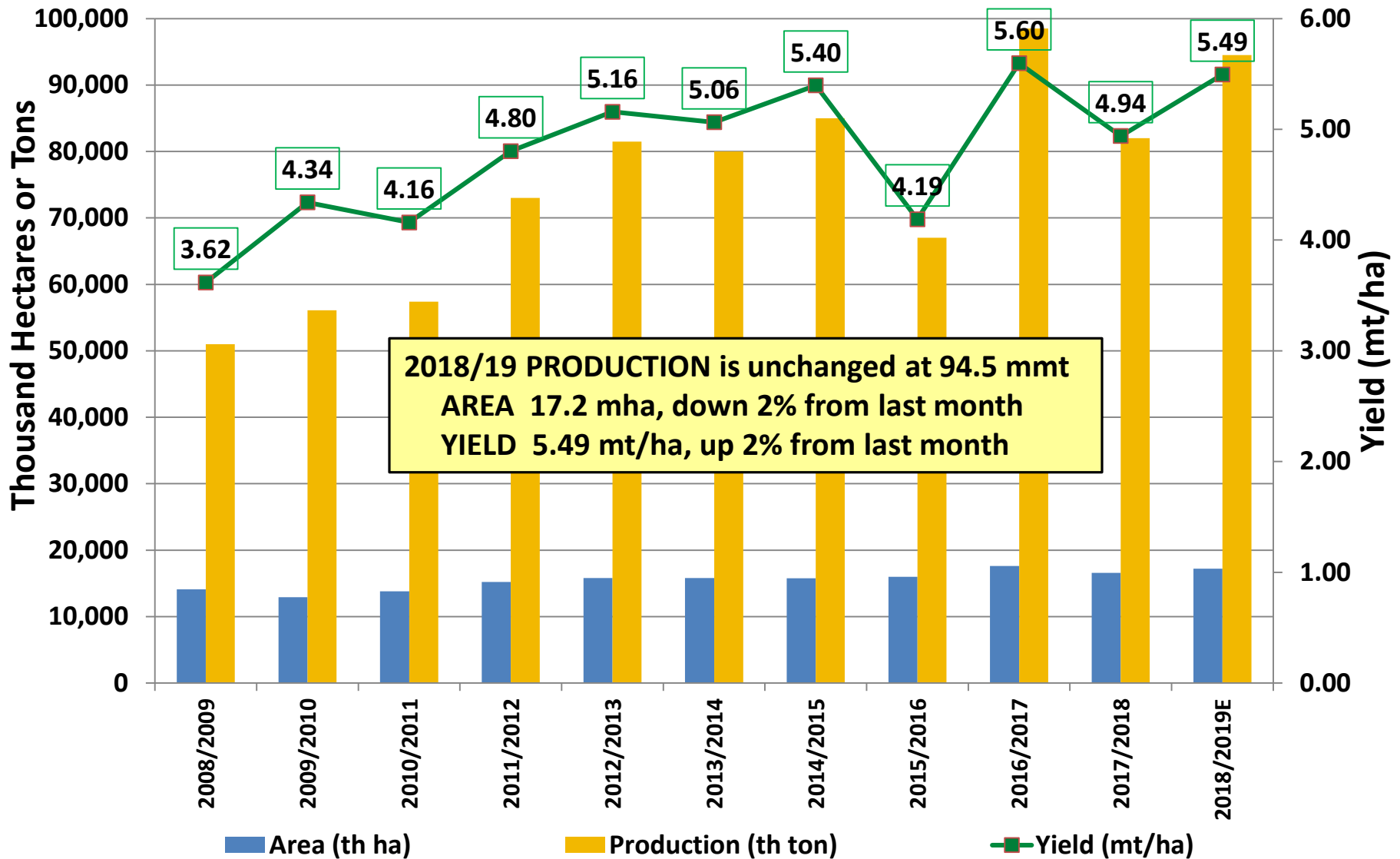


**Mato Grosso corn is the record earliest planted. 96% of 2<sup>nd</sup>-crop corn has been planted.**

# Brazil: Normal Daily Rainfall (mm)



# Brazil Corn

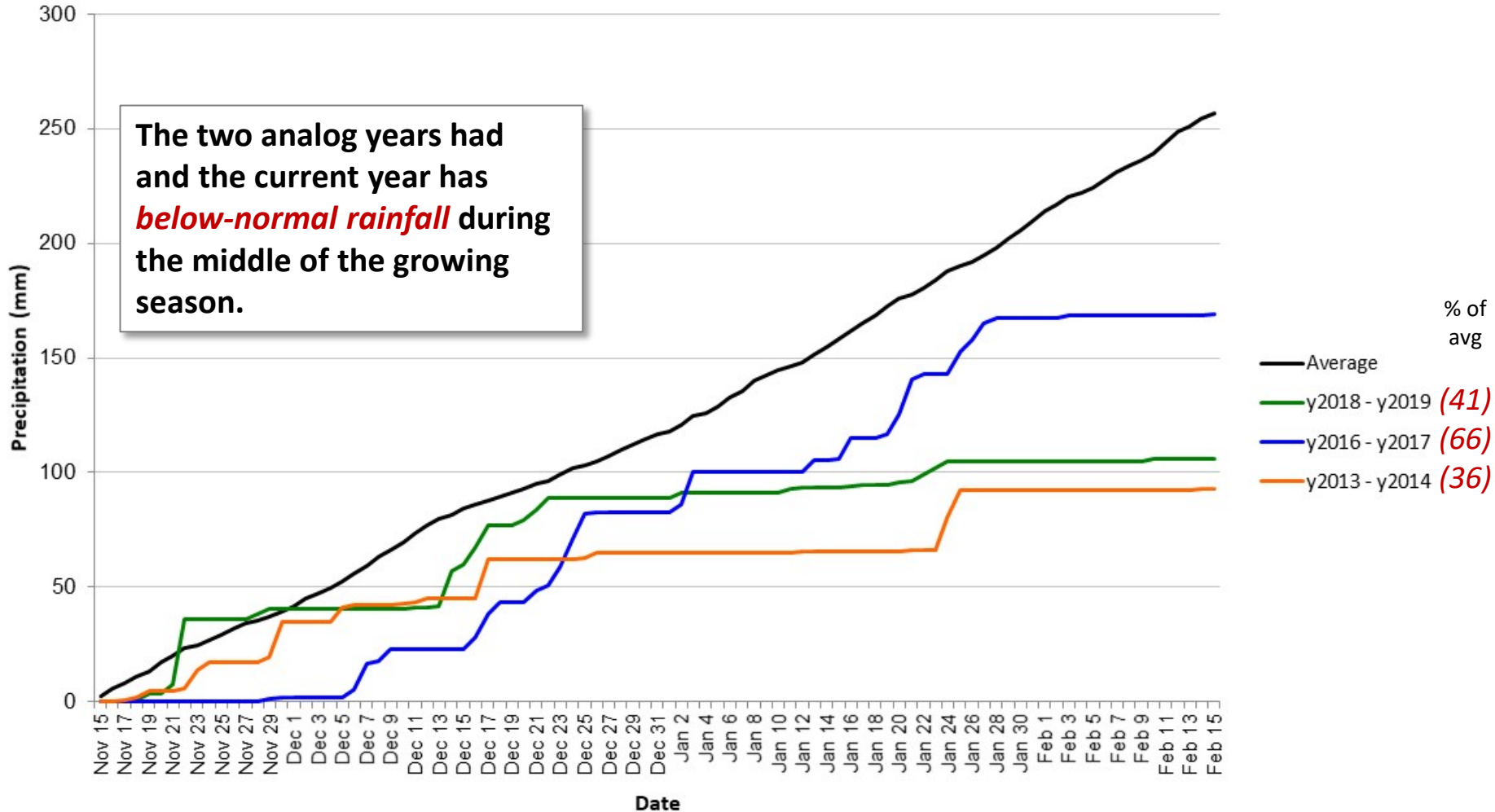


Source: USDA/FAS/PSD

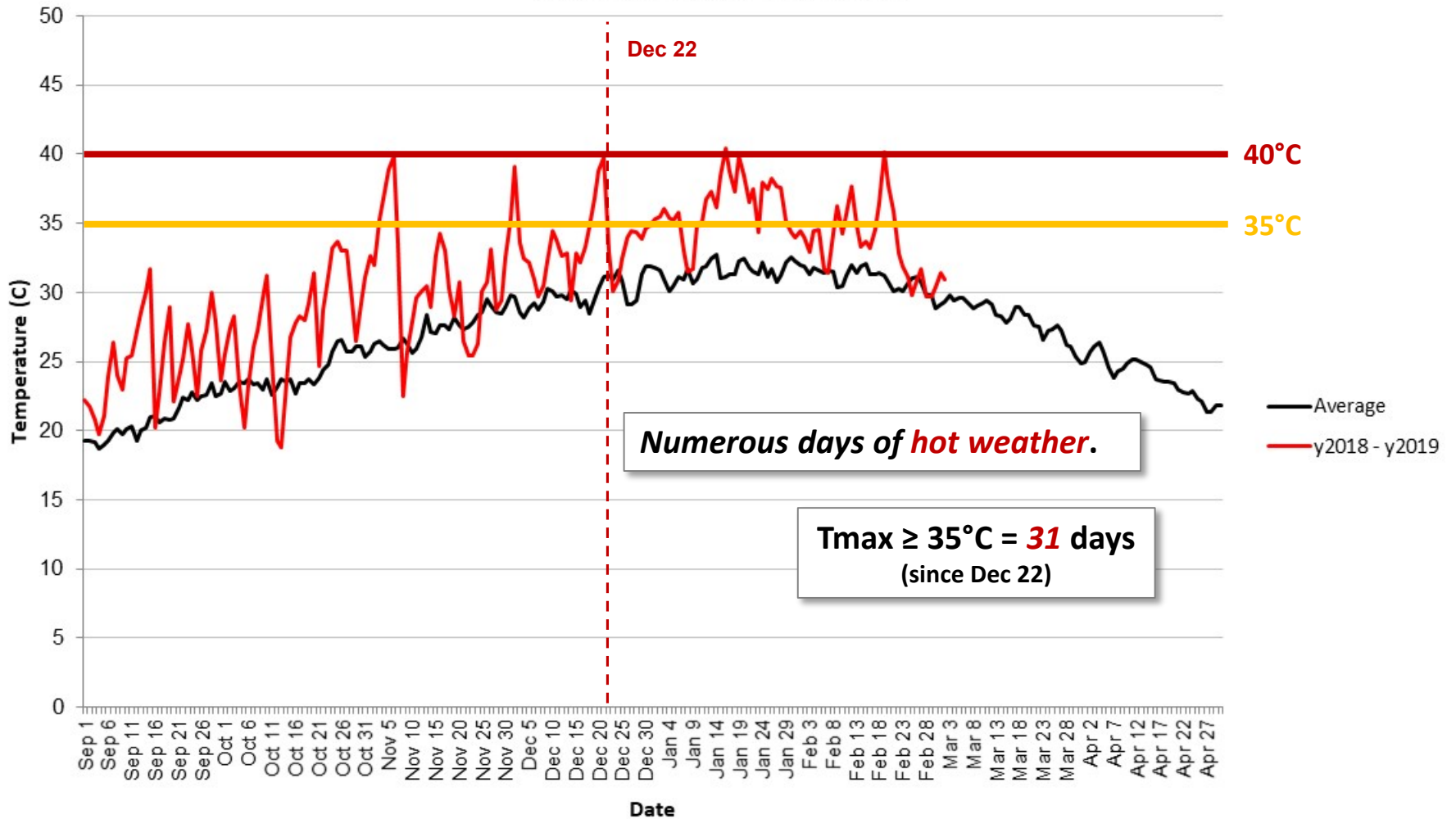




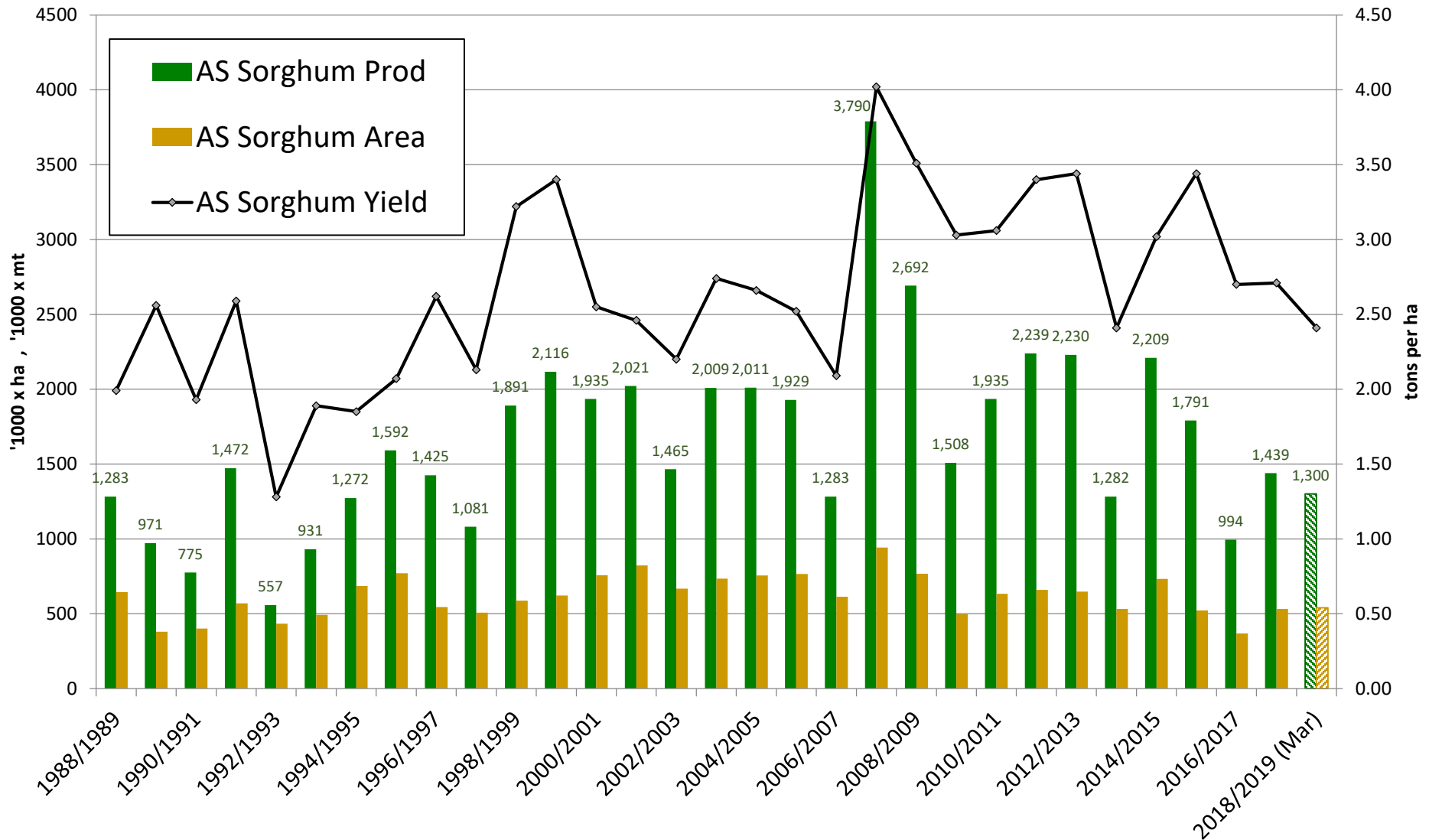
## NSW/QLD Border Region Cumulative Precipitation



# NSW/QLD Border Region Average Maximum Temperature



# Australia Sorghum: Production, Area, and Yield



# World Corn Supply and Use

Item	2017/2018 estimate	2018/2019 forecast	Change from February 8	Change from 2017/2018
----- Million Tons -----				
Beginning stocks	350.6	341.2	0.3	-9.5
Production	1,076.2	1,101.2	1.6	24.9
Total Supply	1,426.9	1,442.3	1.9	15.5
Feed use	671.4	702.9	4.9	31.5
Total use	1,085.7	1,133.8	3.1	48.1
Trade	146.6	167.0	-0.4	20.4
Ending Stocks	341.2	308.5	-1.2	-32.6

# U.S. Corn Supply and Demand

Item	2017/2018 estimate	2018/2019 forecast	Change from February 8	Change from 2017/2018
Planted area (million acres)	90.2	89.1	--	-1.0
Harvested area (million acres)	82.7	81.7	--	-1.0
Yield (bushels per acre)	176.6	176.4	--	-0.2
<i>----- Million bushels -----</i>				
Beginning stocks	2,293	2,140	--	-153
Production	14,609	14,420	--	-189
Imports	36	40	--	4
Total supply	16,939	16,600	--	-339
Feed and residual	5,304	5,375	--	71
Food, seed, and industrial	7,056	7,015	-25	-41
Ethanol	5,605	5,550	-25	-55
Domestic use	12,360	12,390	-25	30
Exports	2,438	2,375	-75	-63
Total use	14,799	14,765	-100	-34
Ending stocks	2,140	1,835	100	-305
<i>----- Percent -----</i>				
Stocks to use ratio	14.5	12.4	0.8	-2.0
<i>----- Dollars per bushel -----</i>				
Average market price	3.36	3.35/3.75	-0.05	0.19

-- No change.

# World Soybean Production

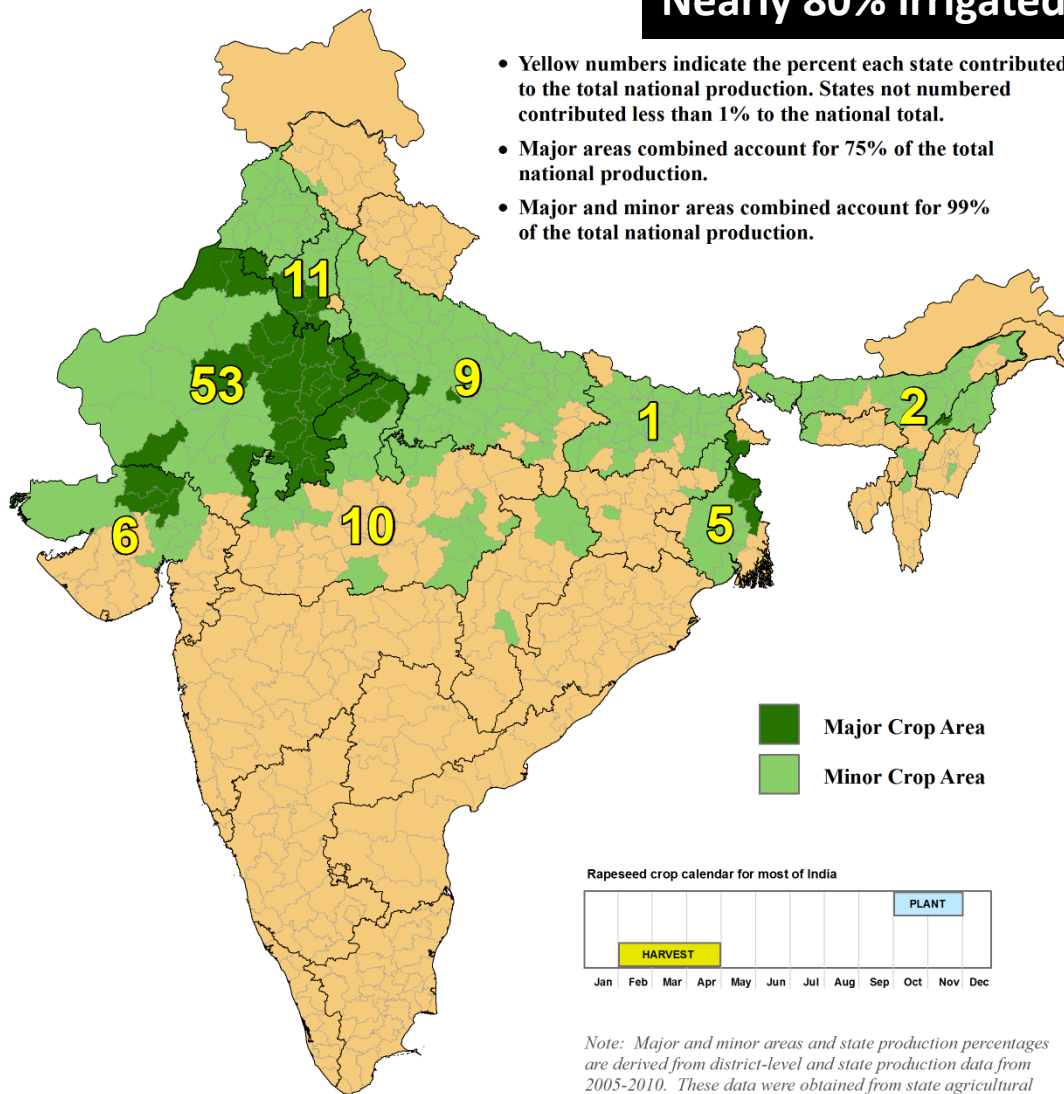
Country or Region	2017/2018 estimate	2018/2019 forecast	Change from February 8	Change from 2017/2018
<i>----- Million Tons -----</i>				
World	340.5	360.1	-0.9	19.6
United States	120.1	123.7	--	3.6
Foreign	220.4	236.4	-0.9	16.0
Argentina	37.8	55.0	--	17.2
Brazil	120.8	116.5	-0.5	-4.3
Paraguay	10.3	9.0	-0.5	-1.3
Canada	7.7	7.3	--	-0.4
India	8.4	11.0	--	2.6
China	15.2	15.9	--	0.7

-- No change.

# India: Rapeseed

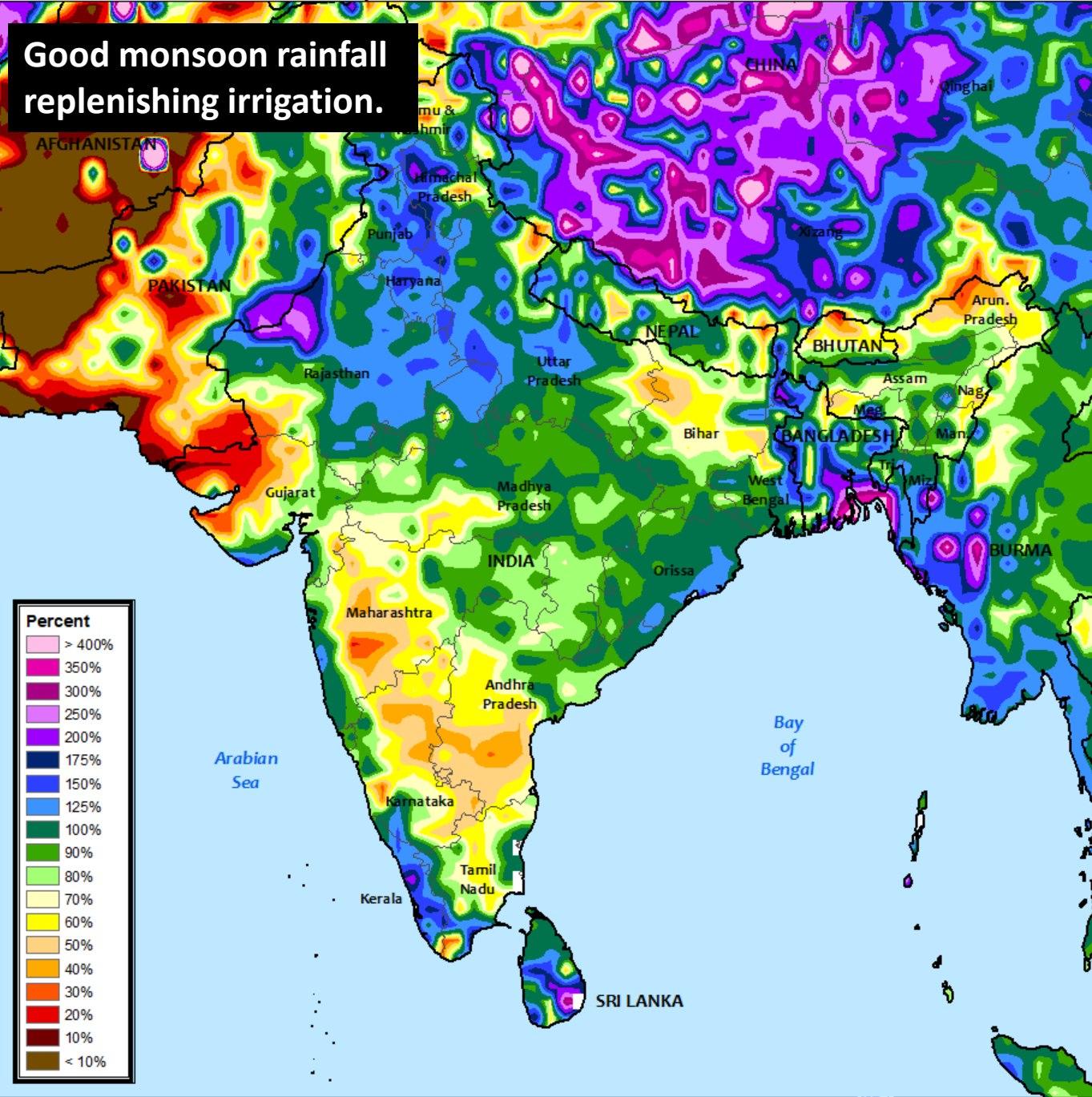
**Nearly 80% irrigated.**

- Yellow numbers indicate the percent each state contributed to the total national production. States not numbered contributed less than 1% to the national total.
- Major areas combined account for 75% of the total national production.
- Major and minor areas combined account for 99% of the total national production.

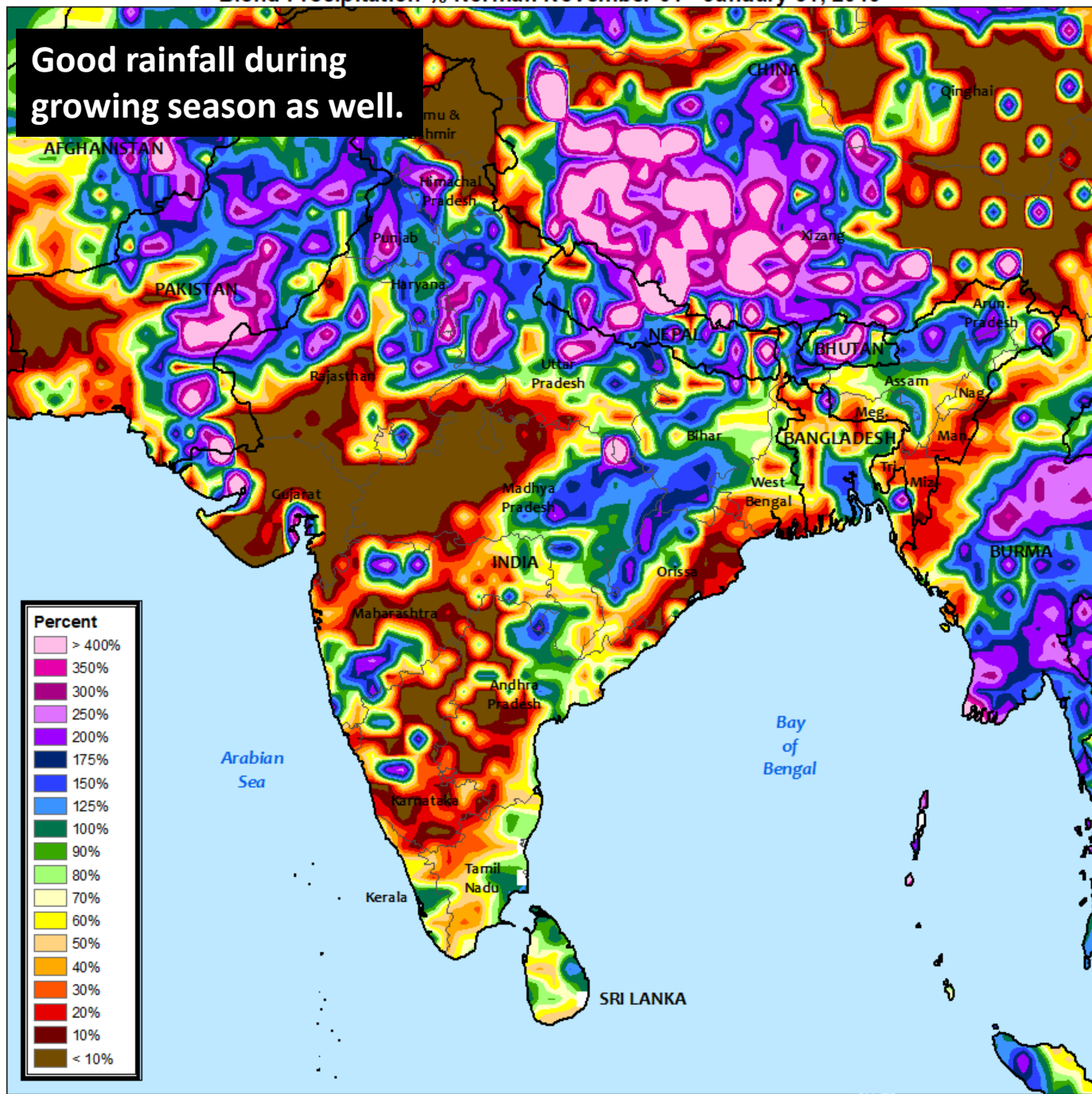


*Note: Major and minor areas and state production percentages are derived from district-level and state production data from 2005-2010. These data were obtained from state agricultural departments.*





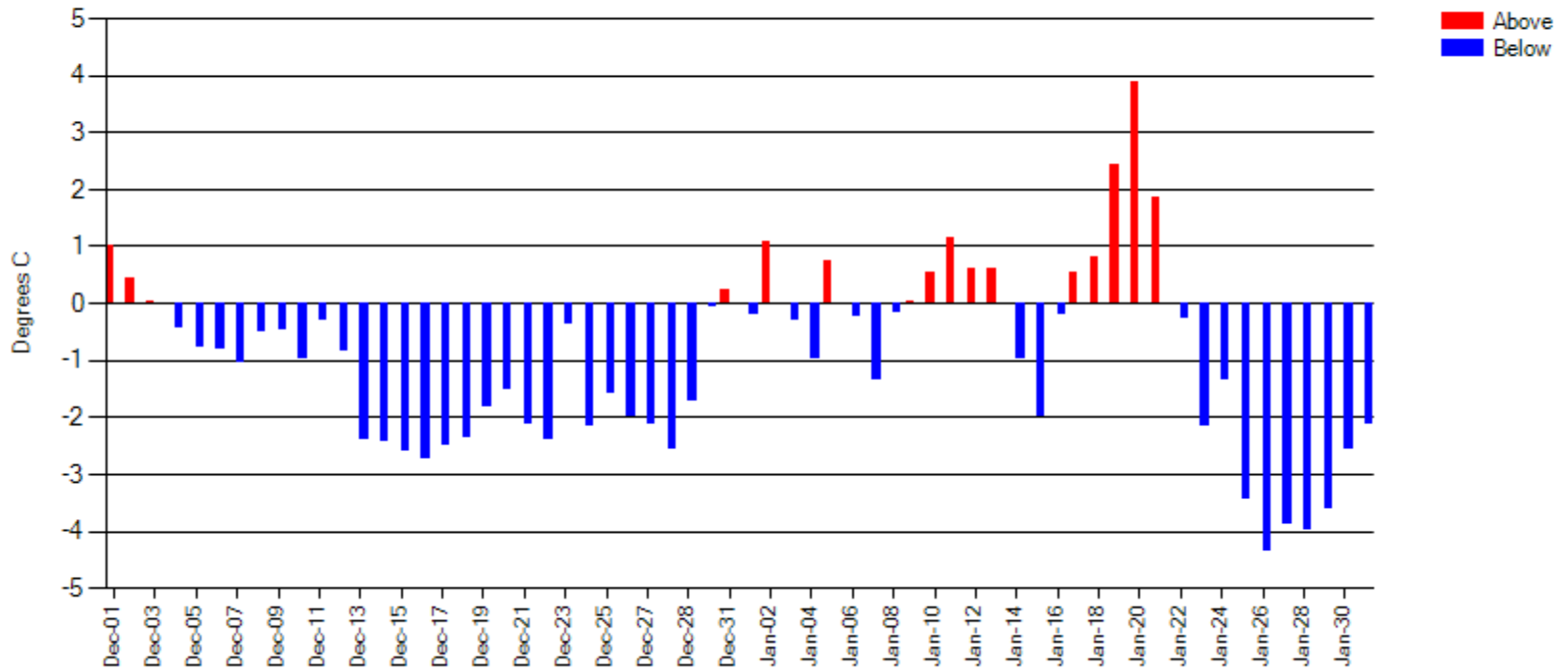
Good rainfall during growing season as well.



**Beneficially cool weather throughout reproduction.**

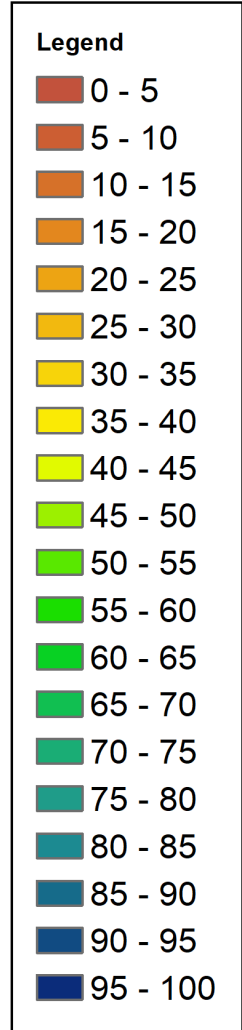
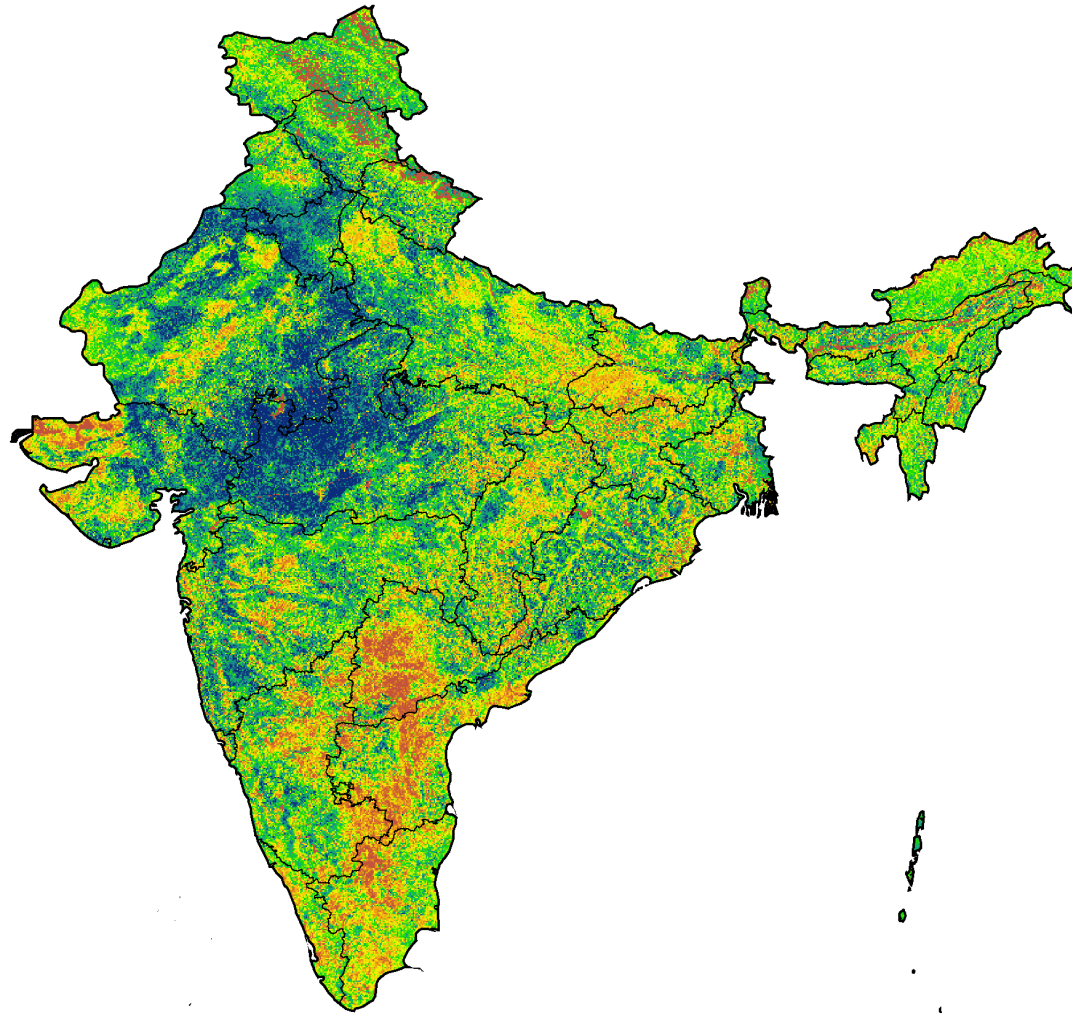
### 7 - RAJASTHAN

Daily Temperature Departures From Normal

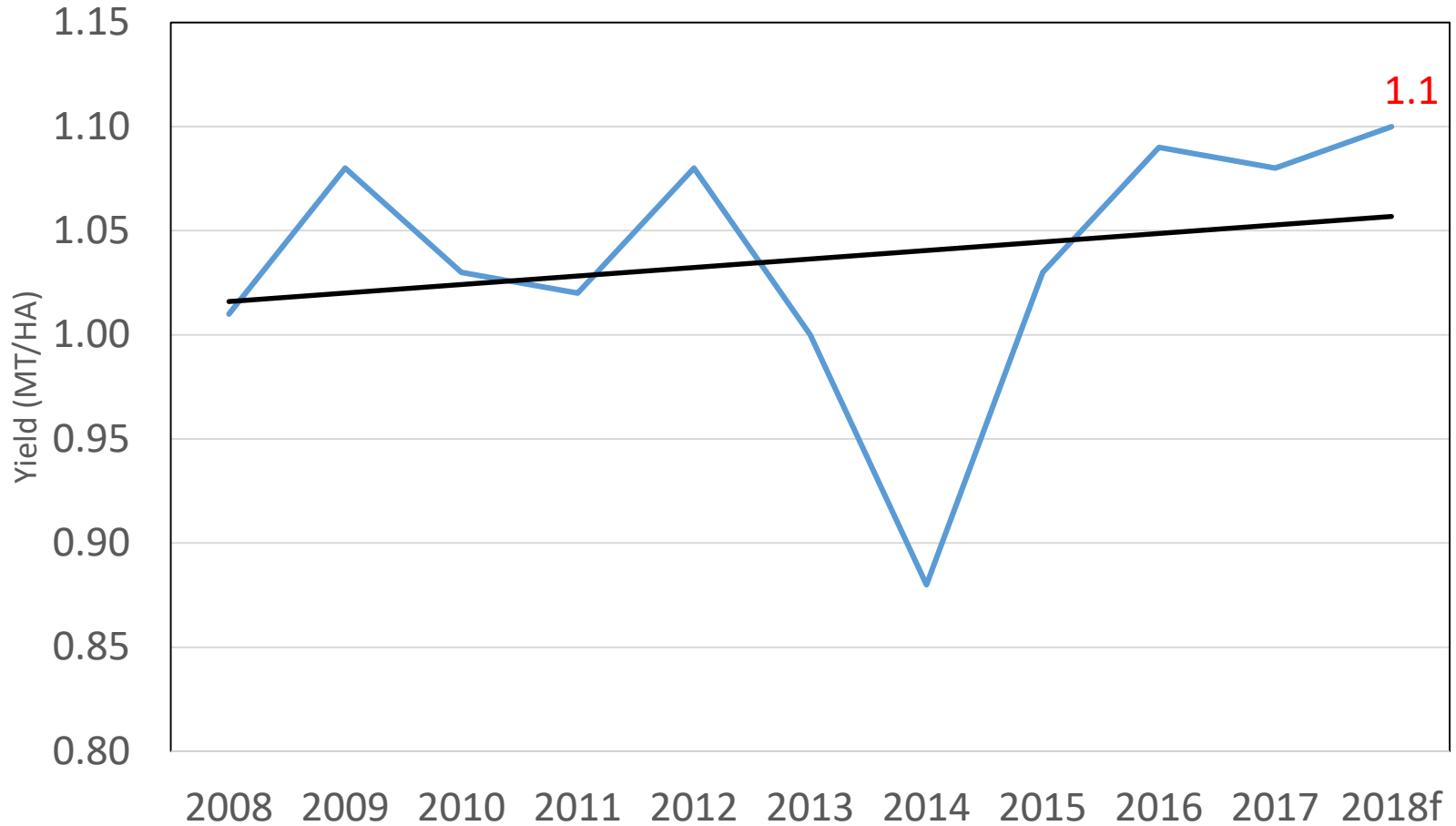


# VHI

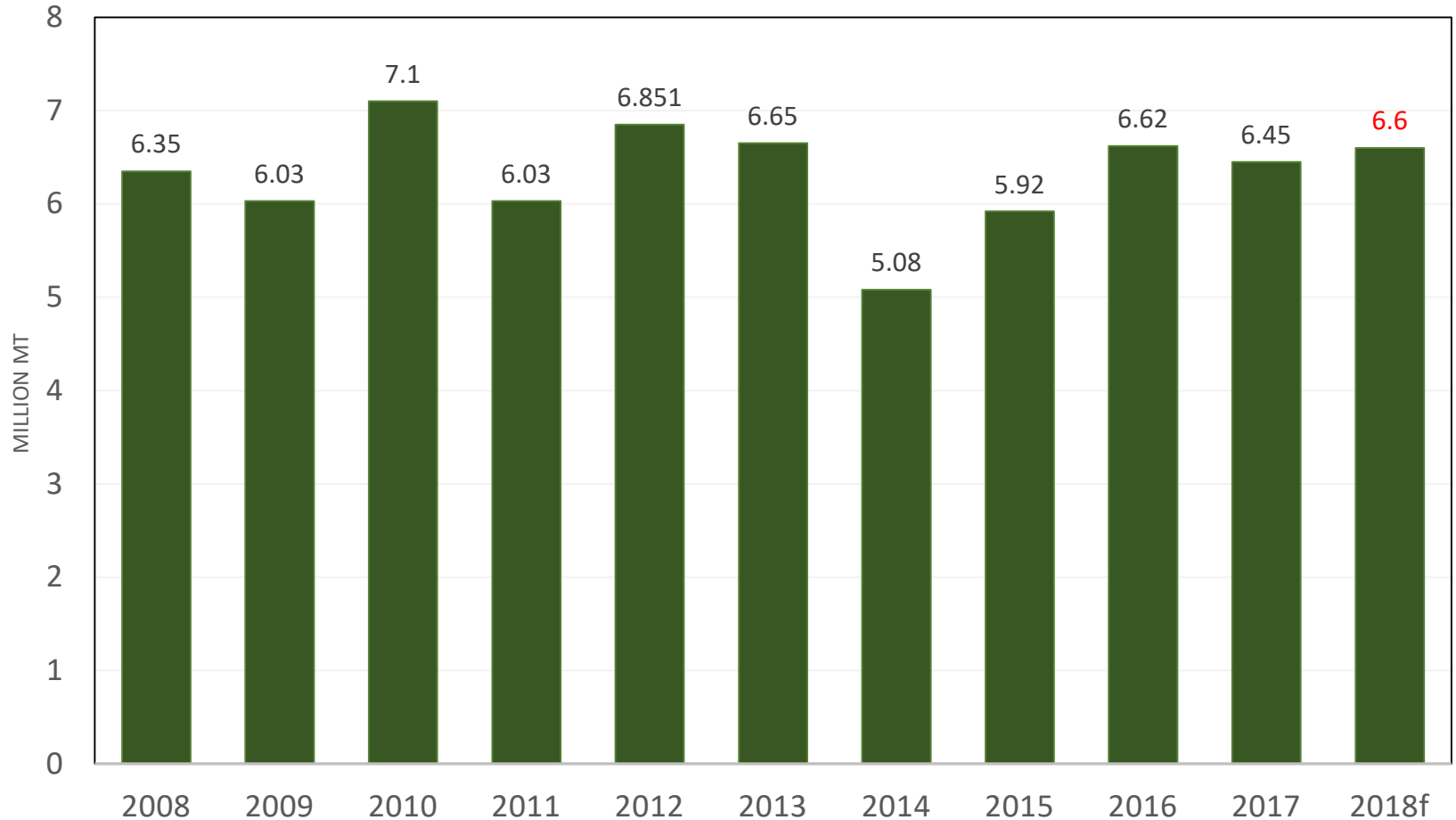
## January 26, 2019



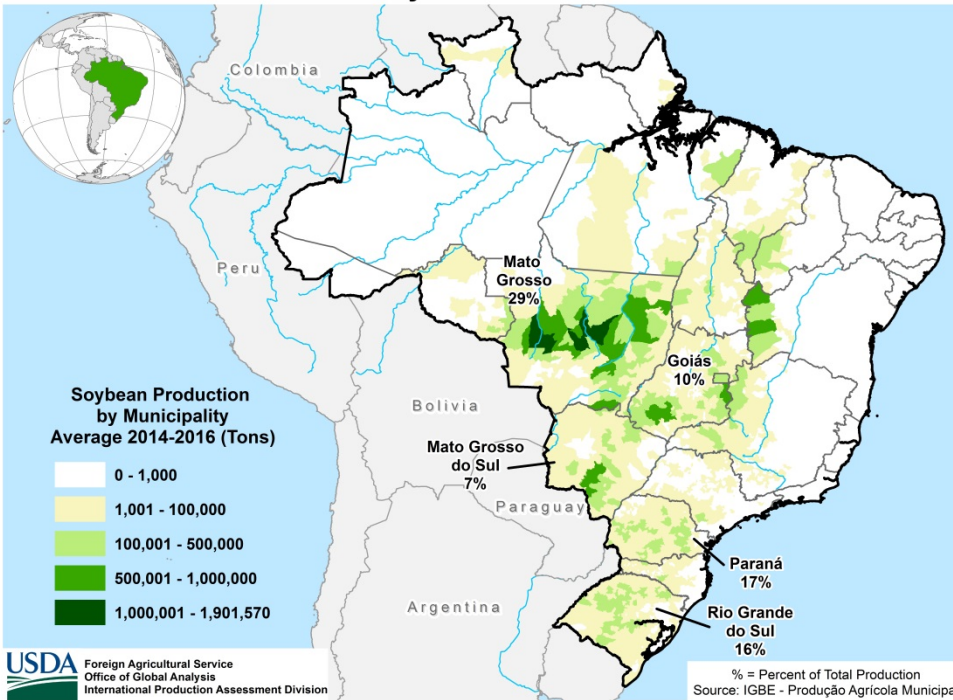
# India Rapeseed Yields at Record Level



# India Rapeseed Production



### Brazil: Soybean Production



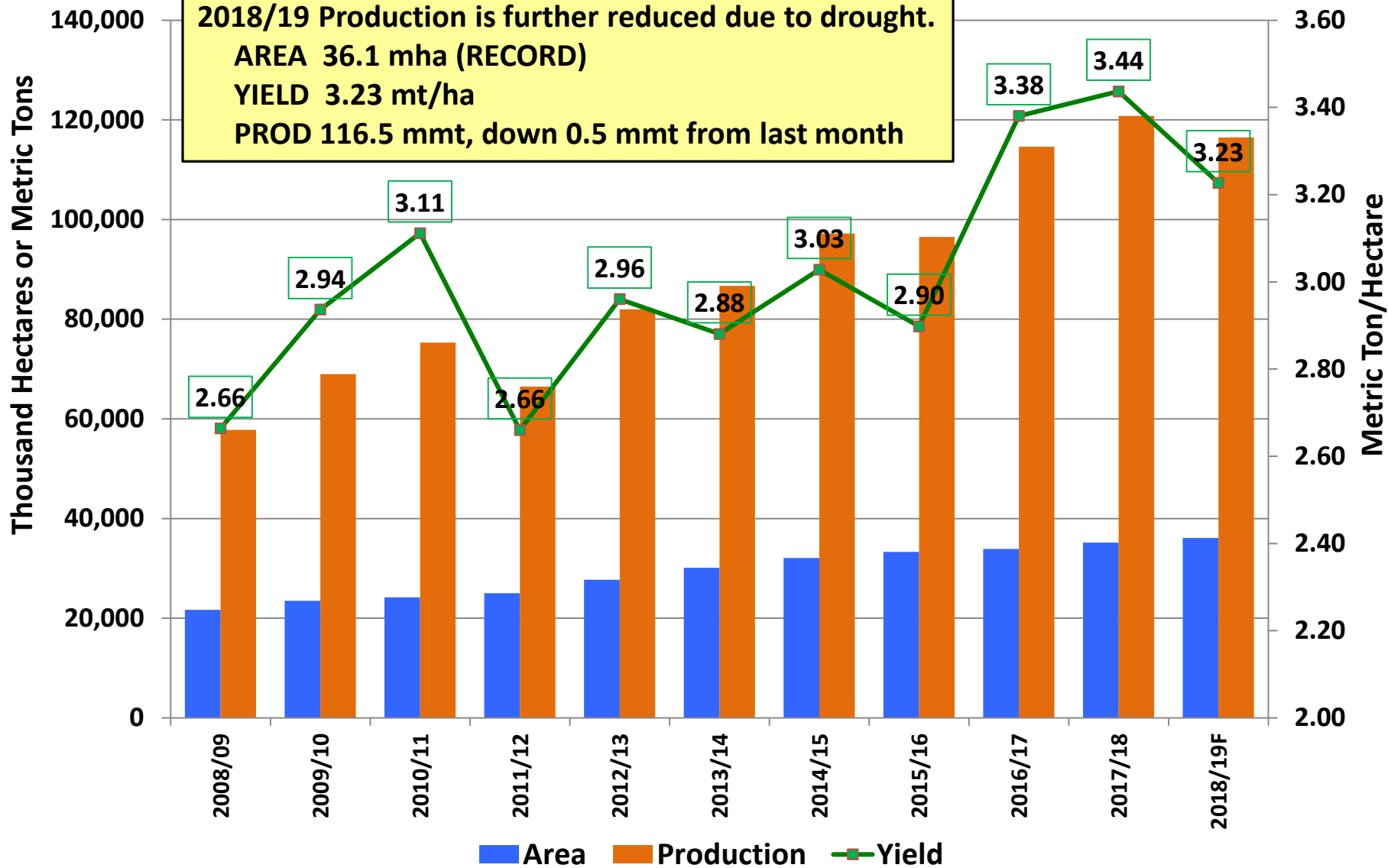
### Planting and Harvest Schedule-Soybean

UF/Região	22/09 a 21/12			21/12 a 20/03			20/03 a 21/06			21/06 a 22/09		
	Primavera			Verão			Outono			Inverno		
	Out	Nov	Dez	Jan	Fev	Mar	Abr	Mai	Jun	Jul	Ago	Set
<b>Norte</b>												
RR	C						P	P	P		C	C
RO	P	P	P	C	C	C	C					
PA		P	P	P			C	C	C	C		
TO	P	P	P		C	C	C	C				
<b>Nordeste</b>												
MA	P	P	P	P	P/C	C	C	C	C	C	C	
PI		P	P	P			C	C	C	C		
BA	P	P	P		C	C	C	C				
<b>Centro-Oeste</b>												
MT	P	P	P	C	C	C	C					P
MS	P	P	P	C	C	C	C					P
GO	P	P	P	C	C	C	C					
DF	P	P	P		C	C	C					
<b>Sudeste</b>												
MG	P	P	P	C	C	C	C	C				
SP	P	P	P		C	C	C	C				P
<b>Sul</b>												
PR	P	P	P	C	C	C	C					P
SC	P	P	P	P	P/C	C	C	C				
RS	P	P	P			C	C	C				

Legenda: P - Plantio, C - Colheita, P/C - Plantio e colheita.  
Fonte: Conab.

# BRAZIL Soybeans

2018/19 Production is further reduced due to drought.  
 AREA 36.1 mha (RECORD)  
 YIELD 3.23 mt/ha  
 PROD 116.5 mmt, down 0.5 mmt from last month





# World Soybean Supply and Use

Item	2017/2018 estimate	2018/2019 forecast	Change from February 8	Change from 2017/2018
----- Million Tons -----				
Beginning stocks	95.8	98.6	0.5	2.7
Production	340.5	360.1	-0.9	19.6
Total Supply	436.3	458.6	-0.4	22.3
Crush	295.1	303.8	-0.9	8.7
Total use	338.0	348.5	-0.9	10.4
Trade	153.0	154.2	-0.2	1.2
Ending Stocks	98.6	107.2	0.4	8.6
<b>Addendum</b>				
Beginning stocks				
Argentina plus Brazil	60.5	56.4	--	-4.1
Imports*				
China	94.1	88.0	--	-6.1

\*From all sources.

-- No change.

# U.S. Soybeans Supply and Demand

Item	2017/2018 estimate	2018/2019 forecast	Change from February 8	Change from 2017/2018
Planted area (million acres)	90.2	89.2	--	-1.0
Harvested area (million acres)	89.5	88.1	--	-1.4
Yield (bushels per acre)	49.3	51.6	--	2.3
<i>----- Million bushels -----</i>				
Beginning stocks	302	438	--	137
Production	4,412	4,544	--	132
Imports	22	20	--	-2
Total supply	4,735	5,002	--	267
Crush	2,055	2,100	10	45
Seed and Residual	113	127	--	14
Domestic use	2,168	2,227	10	59
Exports	2,129	1,875	--	-254
Total use	4,297	4,102	10	-195
Ending stocks	438	900	-10	462
<i>----- Percent -----</i>				
Stocks to use ratio	10.2	21.9	-0.3	11.7
<i>----- Dollars per bushel -----</i>				
Average market price	9.33	8.10/9.10	--	-0.73

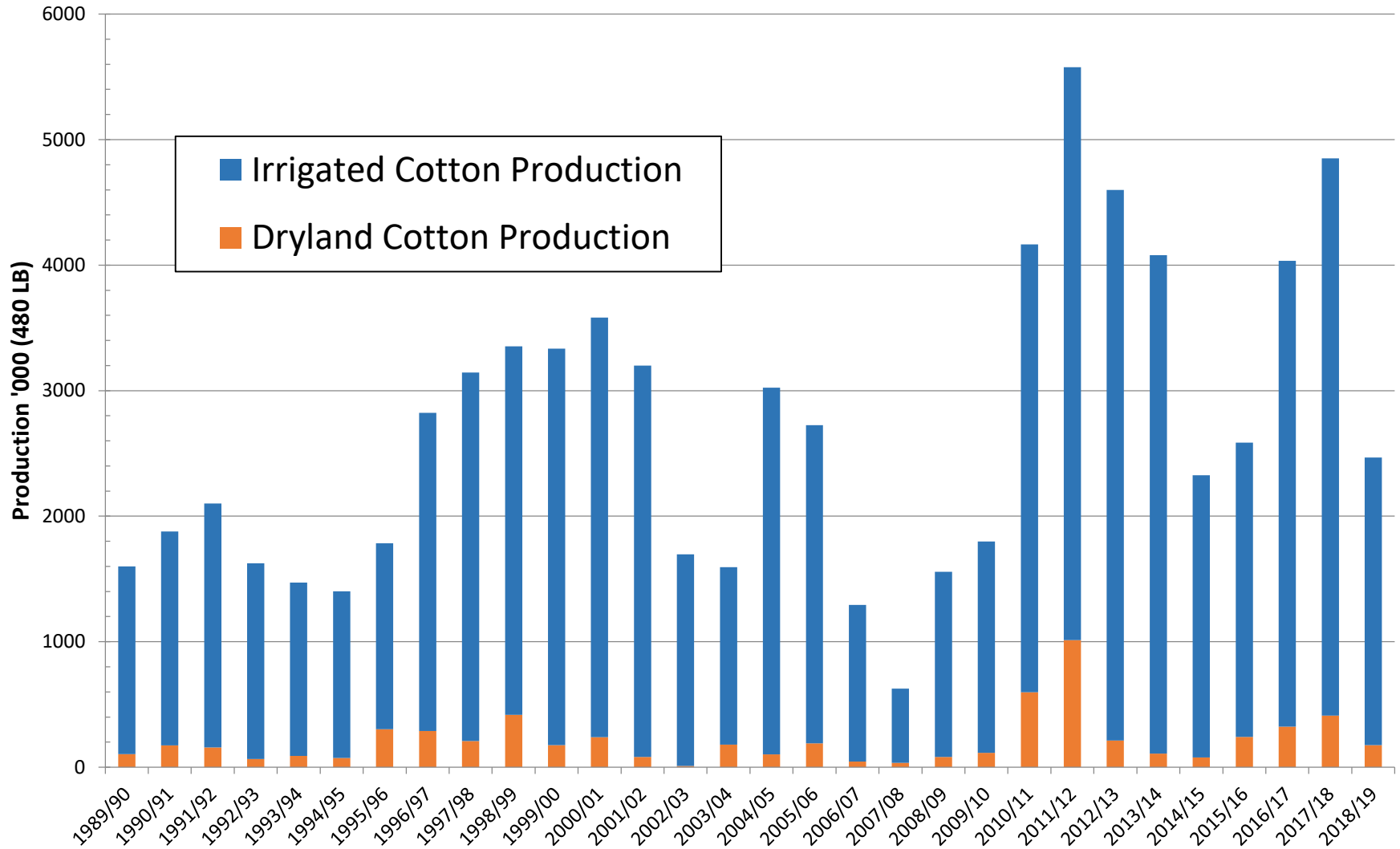
-- No change.

# World Cotton Production

Country or Region	2017/2018 estimate	2018/2019 forecast	Change from February 8	Change from 2017/2018
----- Million bales -----				
World	123.8	118.9	0.4	-4.9
United States	20.9	18.4	--	-2.5
Foreign	102.9	100.5	0.4	-2.4
Argentina	0.8	1.2	--	0.3
Brazil	9.2	11.8	0.4	2.5
Turkey	4.0	3.7	--	-0.3
Australia	4.8	2.5	-0.1	-2.3
China	27.5	27.5	--	--
India	29.0	27.0	--	-2.0
Pakistan	8.2	7.7	0.2	-0.5
Uzbekistan	3.9	3.4	--	-0.5
Turkmenistan	1.3	0.9	-0.1	-0.4
African Franc Zone	5.4	5.6	--	0.2

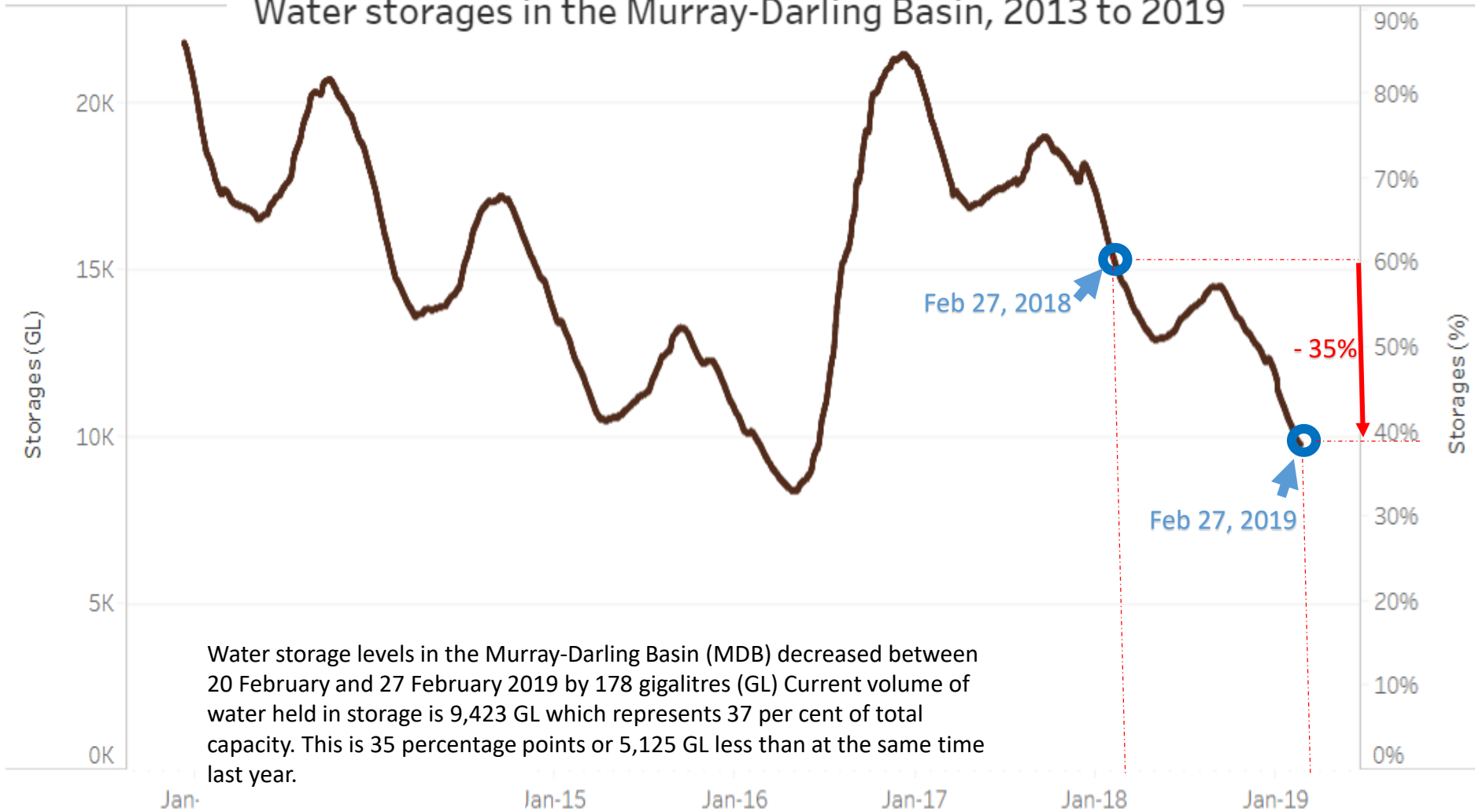


# Australia Cotton Production: Dryland and Irrigated



Source: Cotton Australia, Cotton Growers Publication, FAS

## Water storages in the Murray-Darling Basin, 2013 to 2019



Water storage levels in the Murray-Darling Basin (MDB) decreased between 20 February and 27 February 2019 by 178 gigalitres (GL). Current volume of water held in storage is 9,423 GL which represents 37 per cent of total capacity. This is 35 percentage points or 5,125 GL less than at the same time last year.

Source: Australian Bureau of Agricultural and Resource Economics and Sciences (ABARES) Weekly Water Update

# World Cotton Supply and Demand

Item	2017/2018 estimate	2018/2019 forecast	Change from February 8	Change from 2017/2018
<i>----- Million bales -----</i>				
Beginning stocks	80.4	81.1	0.1	0.7
Production	123.8	118.9	0.4	-4.9
Total Supply	204.2	200.0	0.5	-4.1
Consumption	122.6	123.6	**	1.0
Trade	40.9	42.2	-0.1	1.3
Ending Stocks	81.1	76.1	0.6	-5.1
<b>Addendum</b>				
China ending stocks	38.0	32.4	--	-5.7

-- No change. \*\* Rounds to zero.

# U.S. Cotton Supply and Demand

Item	2017/2018 estimate	2018/2019 forecast	Change from February 8	Change from 2017/2018
Planted area (million acres)	12.72	14.10	--	1.38
Harvested area (million acres)	11.10	10.53	--	-0.57
Yield (pounds per acre)	905	838	--	-67
<i>----- Million bales -----</i>				
Beginning stocks	2.75	4.30	--	1.55
Production	20.92	18.39	--	-2.53
Imports	0.00	0.01	--	**
Total supply	23.68	22.70	--	-0.98
Mill use	3.23	3.20	**	-0.02
Exports	15.85	15.00	--	-0.85
Total use	19.07	18.20	**	-0.87
Unaccounted	0.30	0.20	--	-0.11
Ending stocks	4.30	4.30	--	--
<i>----- Percent -----</i>				
Stocks to use ratio	22.5	23.6	**	1.1
<i>----- Cents per pound -----</i>				
Average market price	68.60	69.00/71.00	-2.00	1.40

-- No change. \*\* Rounds to zero.



# U.S. Sugar Supply and Demand

Item	2017/2018 estimate	2018/2019 forecast	Change from February 8	Change from 2017/2018
<i>----- Thousand short tons, raw value -----</i>				
Beginning Stocks	1,876	2,008	--	132
Production	9,293	9,103	86	-190
Beets	5,279	5,004	104	-275
Cane	4,014	4,099	-18	85
Imports	3,277	2,862	-214	-415
TRQ	1,663	1,560	--	-103
Re-export	326	350	--	24
Mexico	1,223	897	-224	-327
High-tier	64	55	10	-9
Total Supply	14,445	13,973	-128	-473
Exports	170	35	--	-135
Domestic deliveries	12,185	12,270	--	85
Total use	12,438	12,305	--	-133
Ending stocks	2,008	1,668	-128	-340
<i>----- Percent -----</i>				
Stocks/use ratio	16.1	13.6	-1.0	-2.6

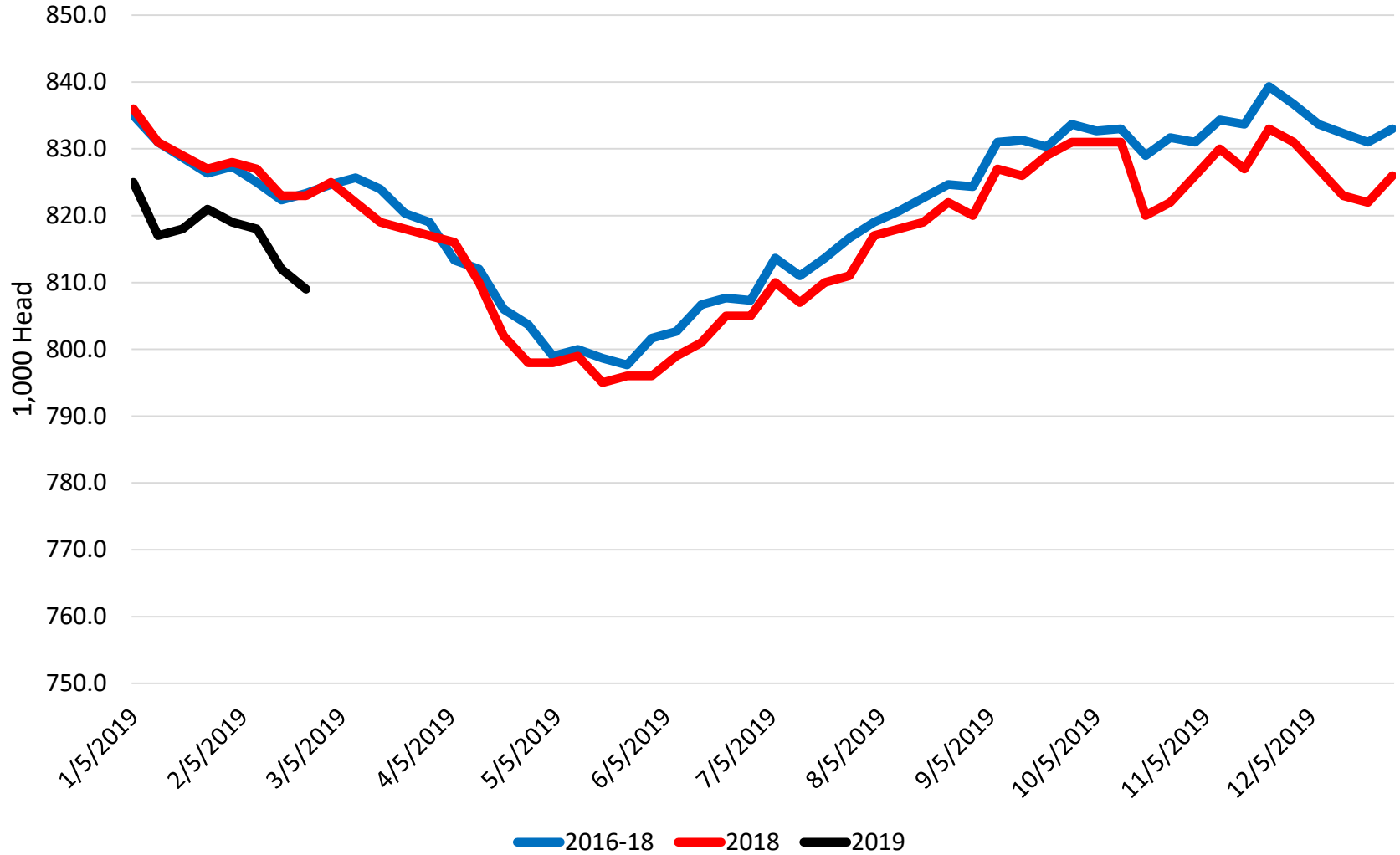
-- No change.

# Mexico Sugar Supply and Demand

Item	2017/2018 estimate	2018/2019 forecast	Change from February 8	Change from 2017/2018
<i>----- Thousand metric tons -----</i>				
Beginning Stocks	1,002	1,395	--	392
Production	6,010	6,152	127	143
Imports	204	70	--	-134
Total Supply	7,216	7,617	127	401
Domestic Use	4,723	5,095	202	372
Exports	1,099	1,102	-164	3
Total use	5,822	6,197	38	375
Ending stocks	1,395	1,420	90	25

-- No change.

# Average Weekly FI Cattle Carcass Weights



# U.S. Meat Production and Prices

Item	2018 estimate	2019 forecast	Change from February 8	Change from 2018
<b>Production</b>	<i>----- Billion Pounds -----</i>			
Beef	26.87	27.30	-0.31	0.43
Pork	26.31	27.43	0.09	1.12
Broilers	42.59	43.10	--	0.51
Turkey	5.88	5.86	-0.06	-0.02
Total Meat	102.42	104.46	-0.28	2.04
<b>Prices</b>	<i>----- Dollars per cwt -----</i>			
Steers	117.12	119.63	1.13	2.51
Hogs	45.93	41.88	-0.88	-4.05
	<i>----- Cents per pound -----</i>			
Broilers	97.8	96.1	-0.9	-1.7
Turkey	80.2	86.4	0.6	6.2

-- No change.

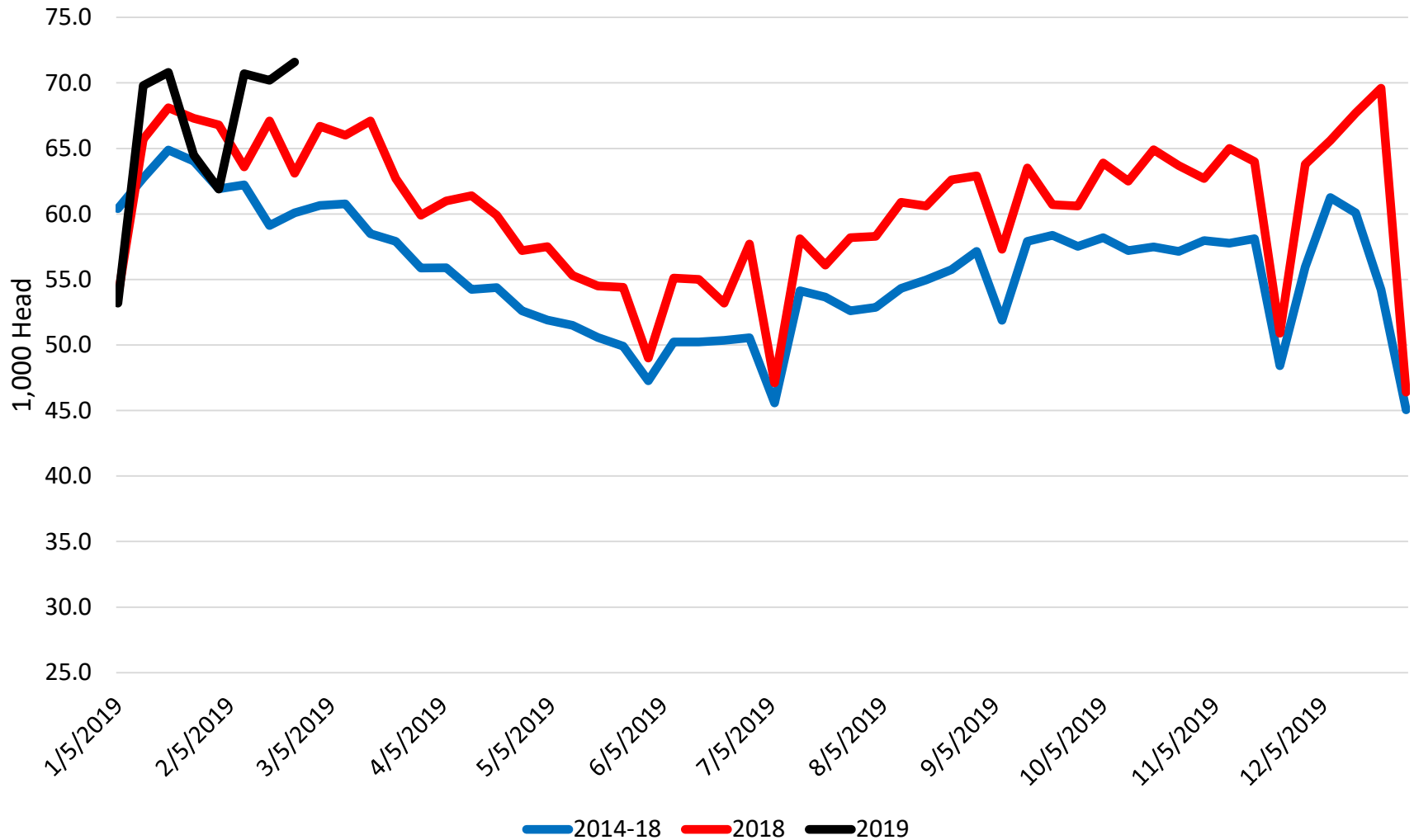
# U.S. Meat Trade

*Million Pounds*

Item	2018		2019		
	Estimate	Change from February 8	Forecast	Change from February 8	Change from 2018
<i>----- Exports -----</i>					
Beef	3,156	-24	3,255	--	99
Pork	5,870	-69	6,125	-175	255
Broilers	7,068	-13	7,145	--	77
Turkey	611	5	610	--	-1
Mature chickens	84	-5	84	-20	0
Total Meat	16,794	-106	17,227	-195	433
<i>----- Imports -----</i>					
Beef	2,998	4	3,010	--	12

-- No change.

# Weekly Federally Inspected Dairy Cow Slaughter



# U.S. Milk Supply and Demand

Item	2018 estimate	2019 forecast	Change from February 8	Change from 2018
<i>----- Billion pounds -----</i>				
<b>Production</b>	<b>217.5</b>	<b>219.7</b>	<b>-0.3</b>	<b>2.3</b>
<b>Fat Basis</b>				
Imports	6.3	6.5	**	0.2
Commercial use	211.9	215.3	-0.2	3.4
Exports	10.5	10.1	-0.2	-0.4
<b>Skim-solid Basis</b>				
Imports	5.5	5.2	0.1	-0.2
Commercial use	178.7	180.1	0.5	1.4
Exports	44.6	43.6	-0.9	-1.0

\*\* Rounds to zero.

# U.S. Dairy Product Prices

Item	2018		2019		
	Estimate	Change from February 8	Forecast	Change from February 8	Change from 2018
<b>Product prices</b>					
<i>----- Dollars per pound -----</i>					
Cheese	1.54	--	1.54	0.02	**
Butter	2.26	--	2.30	0.02	0.04
Nonfat dry milk	0.79	--	0.99	**	0.20
Dry whey	0.34	--	0.44	-0.01	0.10
<b>Class prices</b>					
<i>----- Dollars per cwt -----</i>					
Class III	14.61	--	15.20	0.15	0.59
Class IV	14.23	--	16.10	0.15	1.87
All milk	16.18	-0.02	17.30	0.05	1.13

-- No change. \*\* Rounds to zero.



# U.S. Production Summary

Item	2017/2018		2018/2019		
	Estimate	Change from February 8	Forecast	Change from February 8	Change from 2017/2018
<i>Crops and Products</i>					
Wheat (million bushels)	1,741	--	1,884	--	144
Rice (million cwt)	178.2	--	224.2	--	46.0
Corn (million bushels)	14,609	--	14,420	--	-189
Sorghum (million bushels)	362	--	365	--	3
Barley (million bushels)	143	--	153	--	10
Oats (million bushels)	50	--	56	--	7
Soybeans (million bushels)	4,412	--	4,544	--	132
Soybean oil (million pounds)	23,767	--	24,570	115	803
Soybean meal (thousand s.t.)	49,216	--	49,147	--	-69
Cotton (million bales)	20.92	--	18.39	--	-2.53
Sugar (thousand s.t., raw value)	9,293	--	9,103	86	-190
<i>Milk (billion pounds)</i>	217.5	-0.1	219.7	-0.3	2.3
<i>Meat (billion pounds)</i>					
Beef	26.87	**	27.30	-0.31	0.43
Pork	26.31	**	27.43	0.09	1.12
Broilers	42.59	0.06	43.10	--	0.51
Turkey	5.88	-0.01	5.86	-0.06	-0.02
<b>Total Meat</b>	<b>102.42</b>	<b>0.04</b>	<b>104.46</b>	<b>-0.28</b>	<b>2.04</b>

-- No change. \*\* Rounds to zero.

# U.S. Domestic Consumption Summary

Item	2017/2018		2018/2019		
	Estimate	Change from February 8	Forecast	Change from February 8	Change from 2017/2018
<i>Crops and Products</i>					
Wheat (million bushels)	1,079	--	1,108	-5	29
Rice (million cwt)	134.8	--	135.0	--	0.2
Corn (million bushels)	12,360	--	12,390	-25	30
Sorghum (million bushels)	157	--	250	15	93
Barley (million bushels)	159	--	160	--	1
Oats (million bushels)	146	--	149	-5	3
Soybeans (million bushels)	2,168	--	2,227	10	59
Soybean oil (million pounds)	21,376	--	22,600	200	1,224
Soybean meal (thousand s.t.)	35,502	--	35,950	100	448
Cotton (million bales)	3.23	--	3.20	**	-0.02
Sugar (thousand s.t., raw value)	12,185	--	12,270	--	85
<i>Milk (billion pounds, fat basis)</i>	211.9	-0.1	215.3	-0.2	3.4
<i>Meat (Billion pounds)</i>					
Beef	26.76	0.05	27.10	-0.32	0.35
Pork	21.50	0.01	22.32	0.24	0.83
Broilers	35.22	0.13	35.60	-0.04	0.38
Turkey	5.29	-0.02	5.27	-0.05	-0.02
Total Meat	89.72	0.17	91.26	-0.15	1.53

-- No change. \*\* Rounds to zero.

# U.S. Export Summary

Item	2017/2018		2018/2019		
	Estimate	Change from February 8	Forecast	Change from February 8	Change from 2017/2018
<i>Crops and Products</i>					
Wheat (million bushels)	901	--	965	-35	64
Rice (million cwt)	87.0	--	98.0	-2.0	11.0
Corn (million bushels)	2,438	--	2,375	-75	-63
Sorghum (million bushels)	205	--	85	-15	-120
Soybeans (million bushels)	2,129	--	1,875	--	-254
Soybean oil (million pounds)	2,447	--	2,250	--	-197
Soybean meal (thousand s.t.)	14,057	--	13,750	--	-307
Cotton (million bales)	15.85	--	15.00	--	-0.85
<b>Meat (Million lbs)</b>					
Beef	3,156	-24	3,255	--	99
Pork	5,870	-69	6,125	-175	255
Broilers	7,068	-13	7,145	--	77
Turkey	611	5	610	--	-1
Mature Chickens	84	-5	84	-20	0
<b>Total Meat</b>	<b>16,794</b>	<b>-106</b>	<b>17,227</b>	<b>-195</b>	<b>433</b>

-- No change.

# Price Summary

Item	2017/2018		2018/2019		
	Estimate	Change from February 8	Forecast	Change from February 8	Change from 2017/2018
<i>Crops and products</i>					
Wheat (\$/bu)	4.72	--	5.15	--	0.43
Rice (\$/cwt)	12.90	0.20	12.20	0.10	-0.70
Corn (\$/bu)	3.36	--	3.55	-0.05	0.19
Soybeans (\$/bu)	9.33	--	8.60	--	-0.73
Soybean oil (¢/lb)	30.04	--	30.00	--	-0.04
Soybean meal (\$/s.t.)	345	--	315	--	-30
Cotton (¢/lb)	68.60	--	70.00	-2.00	1.40
<i>Livestock</i>					
Steers (\$/cwt)	117.12	--	119.63	1.13	2.51
Hogs (\$/cwt)	45.93	--	41.88	-0.88	-4.05
Broilers (¢/lb)	97.8	--	96.1	-0.9	-1.7
Turkeys (¢/lb)	80.2	--	86.4	0.6	6.2
<i>Dairy products</i>					
Cheese (\$/lb)	1.54	--	1.54	0.02	**
Butter (\$/lb)	2.26	--	2.30	0.02	0.04
Nonfat dry milk (\$/lb)	0.79	--	0.99	**	0.20
Dry whey (\$/lb)	0.34	--	0.44	-0.01	0.10
<i>Milk classes</i>					
Class III (\$/cwt)	14.61	--	15.20	0.15	0.59
Class IV (\$/cwt)	14.23	--	16.10	0.15	1.87
All milk (\$/cwt)	16.18	-0.02	17.30	0.05	1.13

-- No change. \*\* Rounds to zero.