



***World Agricultural Supply and
Demand Estimates***

Report of June 11, 2019

Interagency Commodity Estimates Committee Forecasts

World Agricultural Outlook Board, Chairing Agency

Economic Research Service

Foreign Agricultural Service

Farm Service Agency

Agricultural Marketing Service

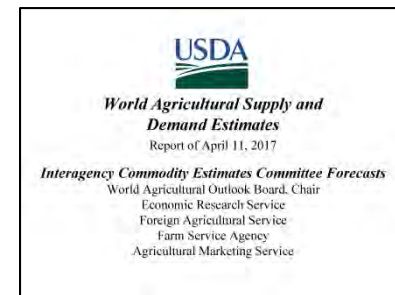
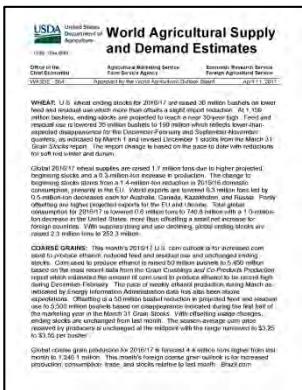
Links to the latest WASDE related publications

Office of the Chief Economist

World Agricultural Outlook Board (WAOB)

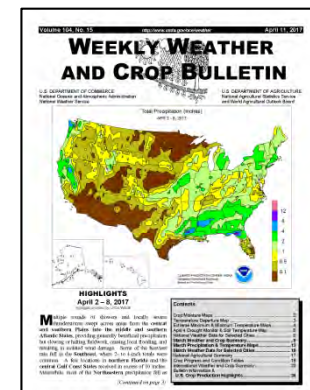
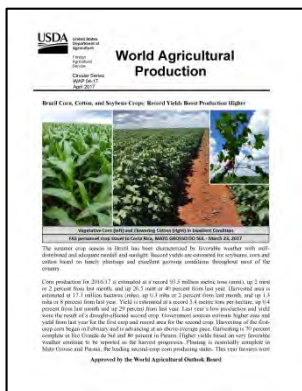
← [WASDE: World Agricultural Supply and Demand Estimates](#)

[Secretary's WASDE Briefing Slides](#) →

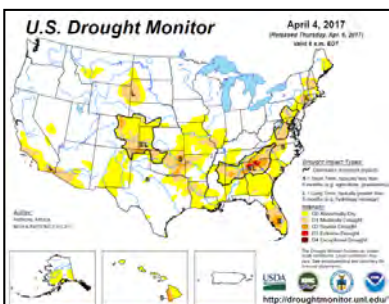


← [Foreign Ag Service: World Agricultural Production](#)

[Weekly Weather and Crop Bulletin](#) →



← [US Drought Monitor \(in cooperation with NOAA and NDMC\)](#)



World Corn Production

Country or Region	2018/2019		2019/2020		
	Estimate	Change from May 10	Forecast	Change from May 10	Change from 2018/2019
----- Million Tons -----					
World	1,120.5	1.5	1,099.2	-34.6	-21.3
United States	366.3	--	347.5	-34.3	-18.8
Foreign	754.2	1.5	751.7	-0.3	-2.5
Argentina	49.0	--	50.0	1.0	1.0
Brazil	101.0	1.0	101.0	--	--
Mexico	26.7	--	27.0	--	0.3
Canada	13.9	--	14.0	-1.4	0.1
European Union	63.4	--	64.2	--	0.8
Serbia	7.0	--	6.5	--	-0.6
FSU-12	52.5	--	51.3	0.5	-1.2
Ukraine	35.8	--	33.0	--	-2.8
Russia	11.4	--	13.5	0.5	2.1
South Africa	11.5	0.5	14.0	--	2.5
China	257.3	--	254.0	--	-3.3
India	27.8	--	29.0	--	1.2

-- No change.

World Corn Supply and Use

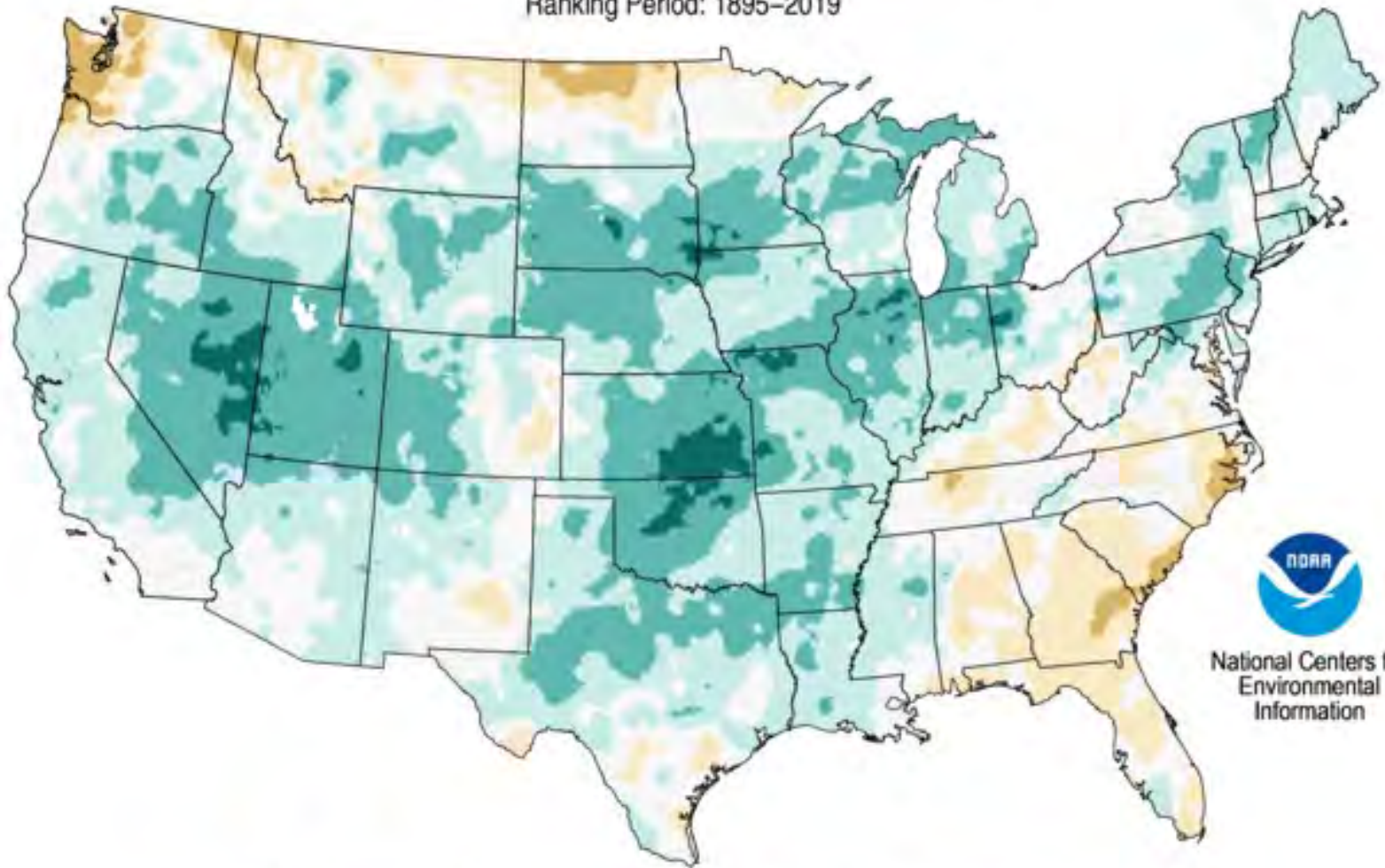
Item	2018/2019		2019/2020		
	Estimate	Change from May 10	Forecast	Change from May 10	Change from 2018/2019
----- Million Tons -----					
Beginning stocks	339.3	**	325.4	-0.6	-13.9
Production	1,120.5	1.5	1,099.2	-34.6	-21.3
Total Supply	1,459.7	1.4	1,424.6	-35.2	-35.1
Feed use	699.3	-0.4	696.3	-8.8	-3.1
Total use	1,134.3	2.0	1,134.0	-11.0	-0.3
Trade	172.8	2.5	169.8	-1.8	-3.0
Ending Stocks	325.4	-0.6	290.5	-24.2	-34.9

** Rounds to zero.

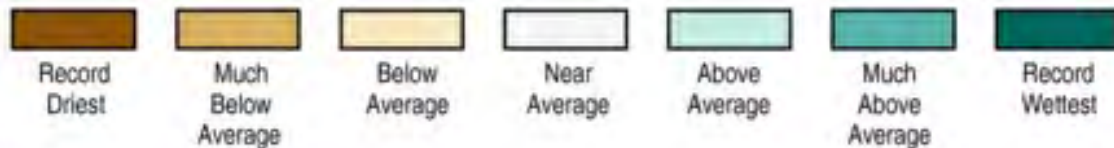
Total Precipitation Percentiles

March–May 2019

Ranking Period: 1895–2019



National Centers for
Environmental
Information

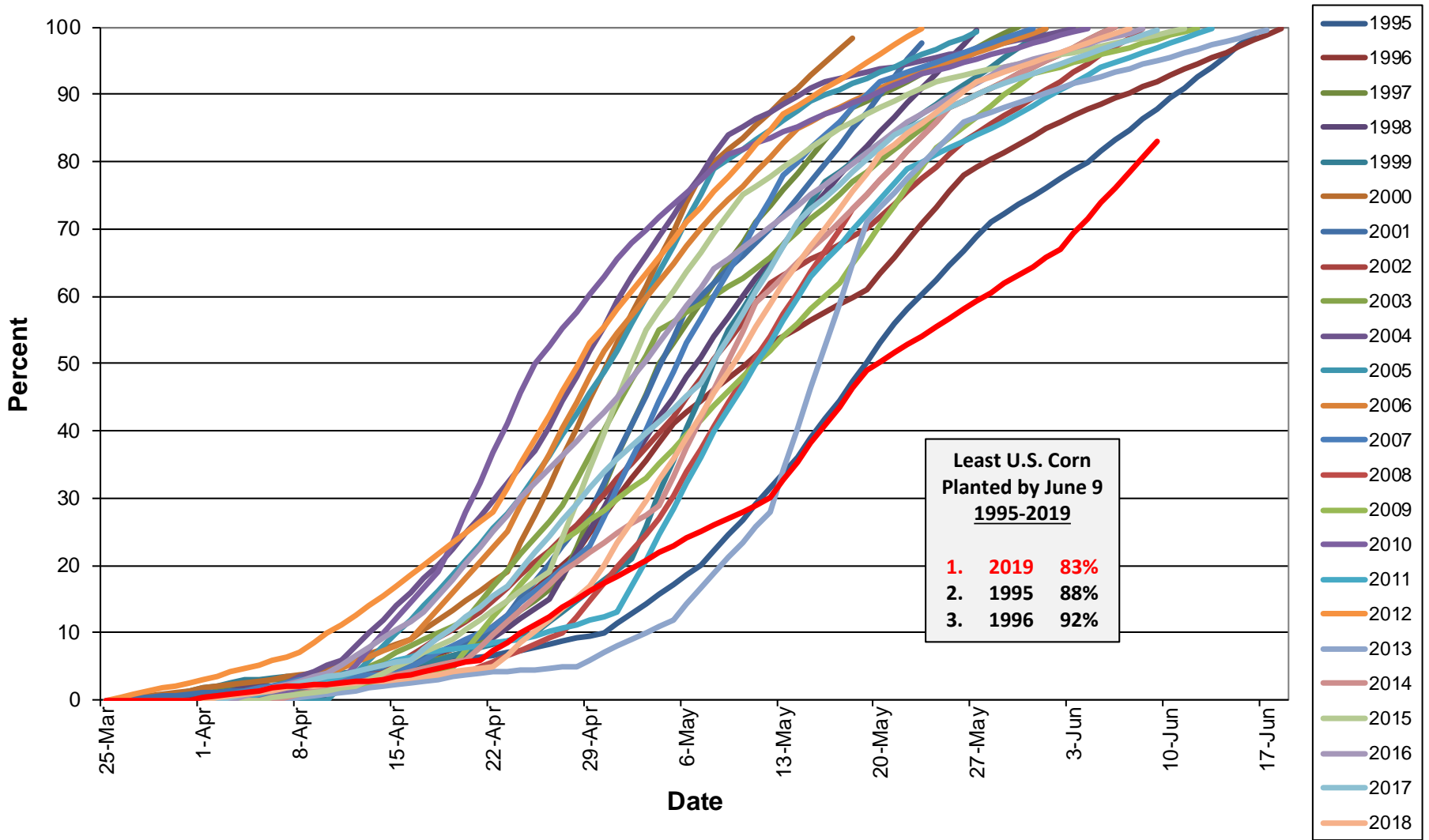


Created: Tue Jun 04 2019

Data Source: 5km Gridded Dataset (nClimGrid)

June 11, 2019

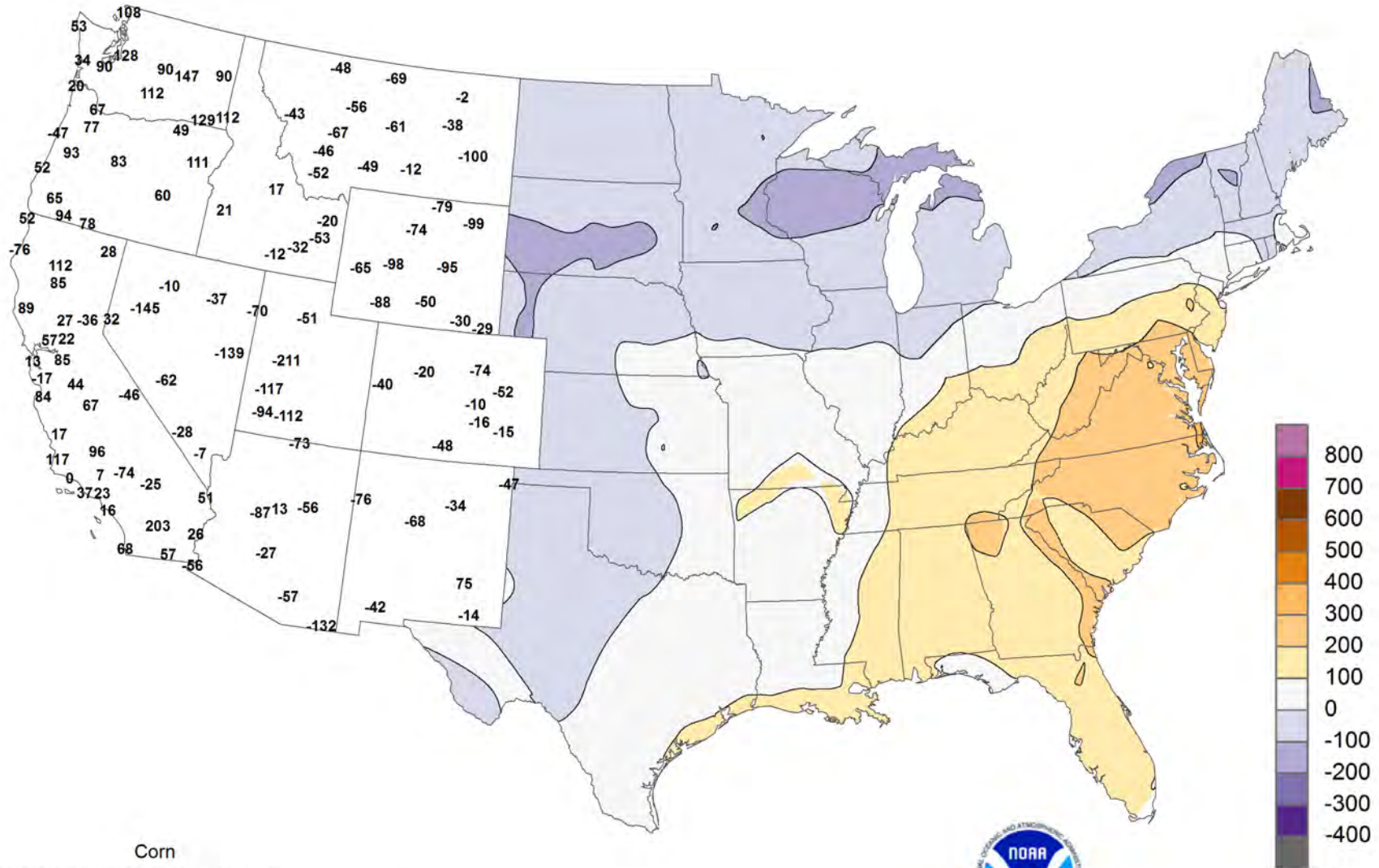
U.S. CORN: Percent Planted



Based on NASS crop progress data.

Departure from Normal Growing Degree Days

Apr 1 - Jun 8, 2019



Corn

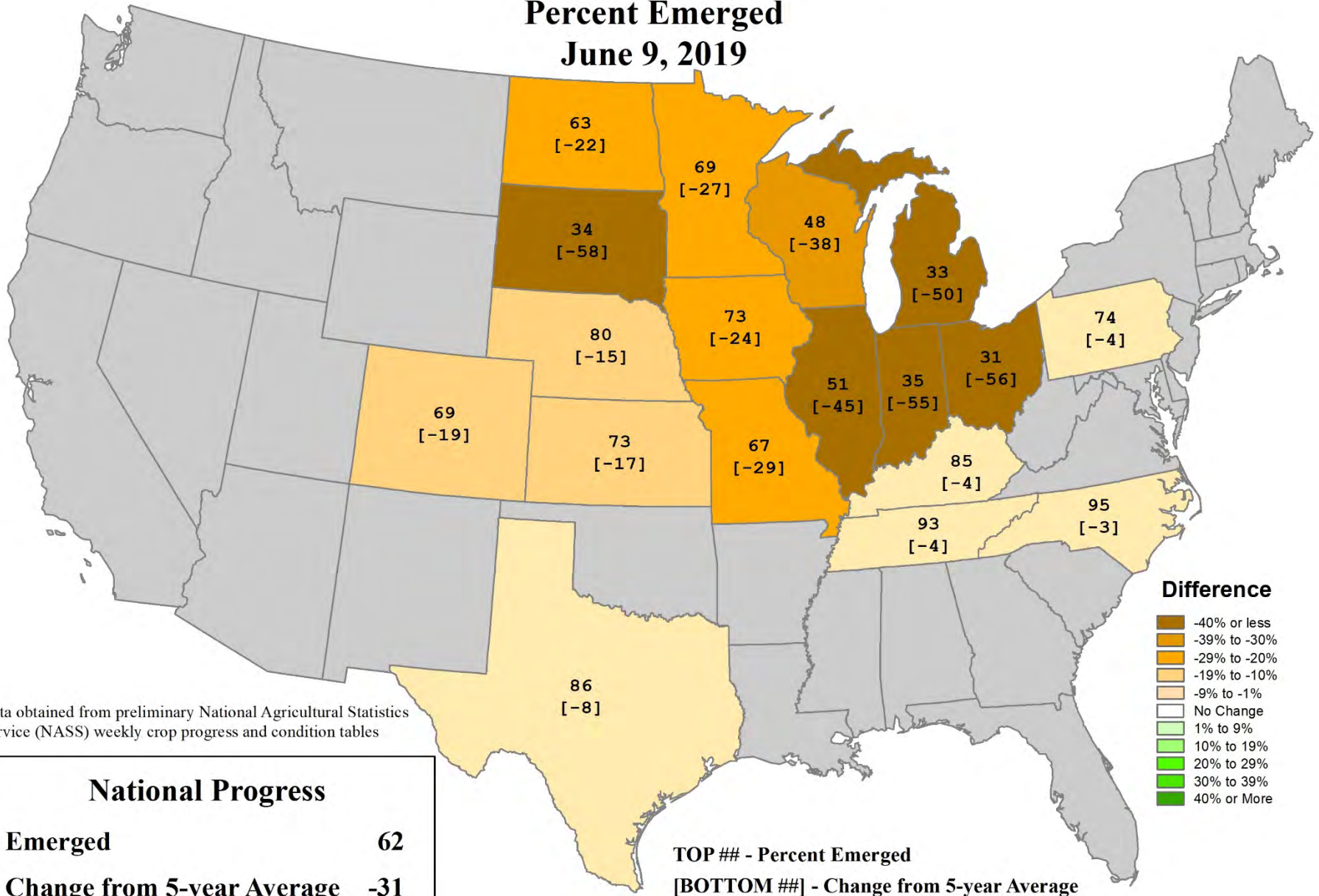
Computed to 50°F base with daily maximum temperature limited to 86°F or less and daily minimum to 50°F or more.



June 11, 2019

U.S. Corn Progress

Percent Emerged
June 9, 2019



Data obtained from preliminary National Agricultural Statistics Service (NASS) weekly crop progress and condition tables

National Progress	
Emerged	62
Change from 5-year Average	-31

TOP ## - Percent Emerged
[BOTTOM ##] - Change from 5-year Average

- Difference**
- Dark Brown: -40% or less
 - Brown: -39% to -30%
 - Orange: -29% to -20%
 - Light Orange: -19% to -10%
 - Yellow: -9% to -1%
 - White: No Change
 - Light Green: 1% to 9%
 - Green: 10% to 19%
 - Dark Green: 20% to 29%
 - Very Dark Green: 30% to 39%
 - Black: 40% or More

U.S. Corn Supply and Demand

Item	2018/2019		2019/2020		
	Estimate	Change from May 10	Forecast	Change from May 10	Change from 2018/2019
Planted area (million acres)	89.1	--	89.8	-3.0	0.7
Harvested area (million acres)	81.7	--	82.4	-3.0	0.7
Yield (bushels per acre)	176.4	--	166.0	-10.0	-10.4
<i>----- Million bushels -----</i>					
Beginning stocks	2,140	--	2,195	100	55
Production	14,420	--	13,680	-1,350	-740
Imports	35	--	50	15	15
Total supply	16,595	--	15,925	-1,235	-670
Feed and residual	5,300	--	5,150	-300	-150
Food, seed, and industrial	6,900	--	6,950	--	50
Ethanol	5,450	--	5,500	--	50
Domestic use	12,200	--	12,100	-300	-100
Exports	2,200	-100	2,150	-125	-50
Total use	14,400	-100	14,250	-425	-150
Ending stocks	2,195	100	1,675	-810	-520
<i>----- Percent -----</i>					
Stocks to use ratio	15.2	0.8	11.8	-5.2	-3.5
<i>----- Dollars per bushel -----</i>					
Average market price	3.60	0.10	3.80	0.50	0.20

-- No change.

World Rice Production

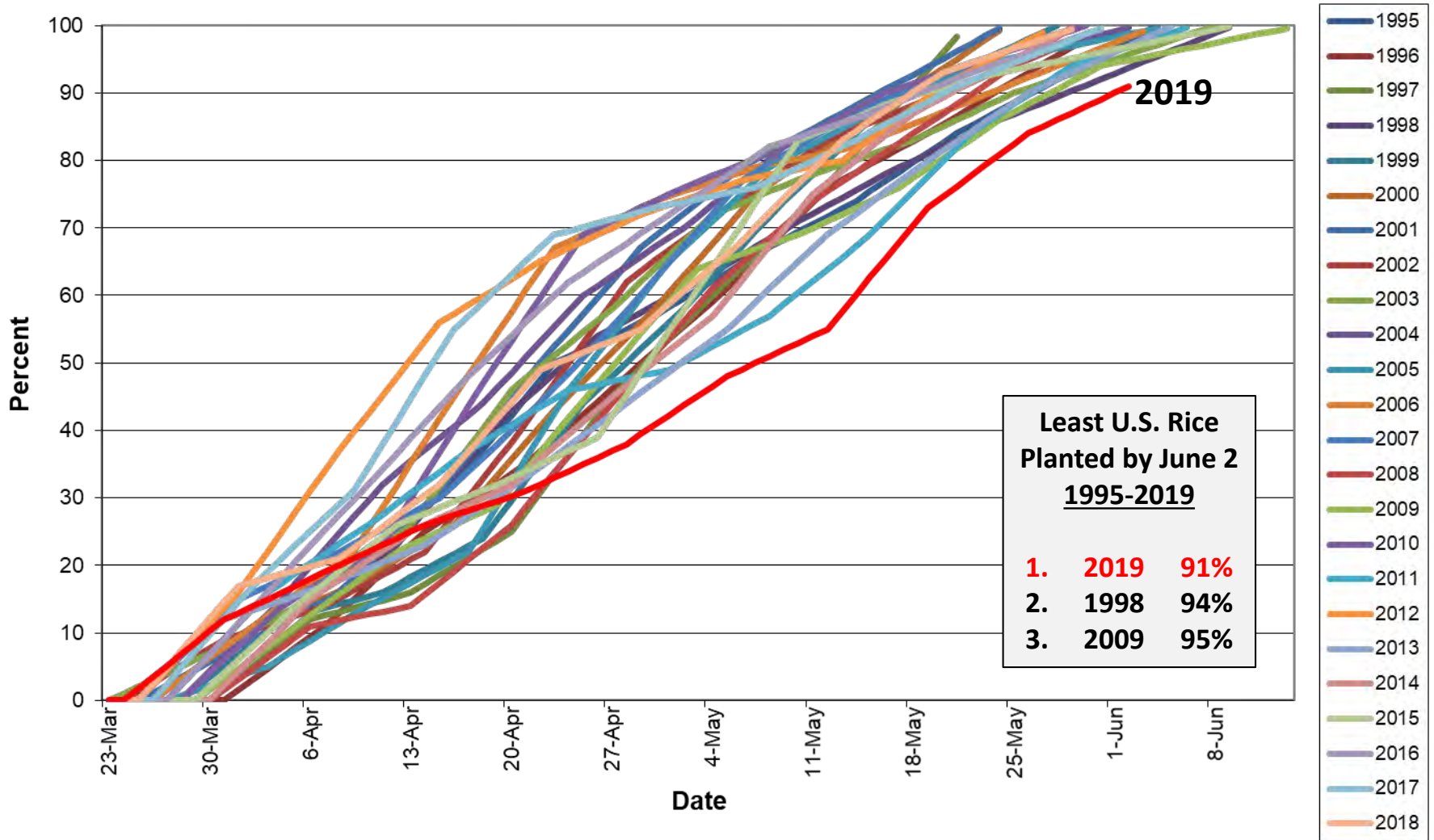
Country or Region	2018/2019		2019/2020		
	Estimate	Change from May 10	Forecast	Change from May 10	Change from 2018/2019
----- Million Tons -----					
World	499.1	-0.8	497.6	-0.8	-1.5
United States	7.1	--	6.3	-0.6	-0.8
Foreign	492.0	-0.8	491.3	-0.2	-0.6
Argentina	0.8	--	0.8	--	--
Brazil	7.3	-0.1	7.3	--	--
Egypt	2.8	--	3.1	**	0.3
Australia	0.08	--	0.08	--	--
Bangladesh	35.0	--	35.3	--	0.3
Burma	13.2	0.1	13.3	--	0.1
Cambodia	5.6	--	5.7	--	0.1
China	148.5	--	146.0	--	-2.5
India	115.6	-0.4	115.0	--	-0.6
Indonesia	37.1	--	37.4	--	0.3
Japan	7.7	--	7.7	--	**
Sri Lanka	3.0	--	2.9	--	-0.1
Pakistan	7.4	--	7.5	--	0.1
Philippines	11.8	-0.2	12.2	--	0.4
Thailand	20.7	--	20.9	-0.2	0.2
Vietnam	27.7	--	28.0	--	0.3

-- No change. ** Rounds to zero.

World Rice Supply and Use

Item	2018/2019 estimate	2019/2020 forecast	Change from May 10	Change from 2018/2019
<i>----- Million Tons -----</i>				
Beginning stocks	162.1	170.2	0.3	8.1
Production	499.1	497.6	-0.8	-1.5
Total Supply	661.2	667.8	-0.5	6.7
Total use	491.0	496.0	-0.2	5.0
Trade	46.8	47.2	-0.4	0.3
Ending Stocks	170.2	171.9	-0.3	1.7

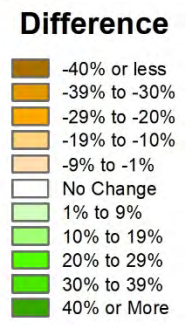
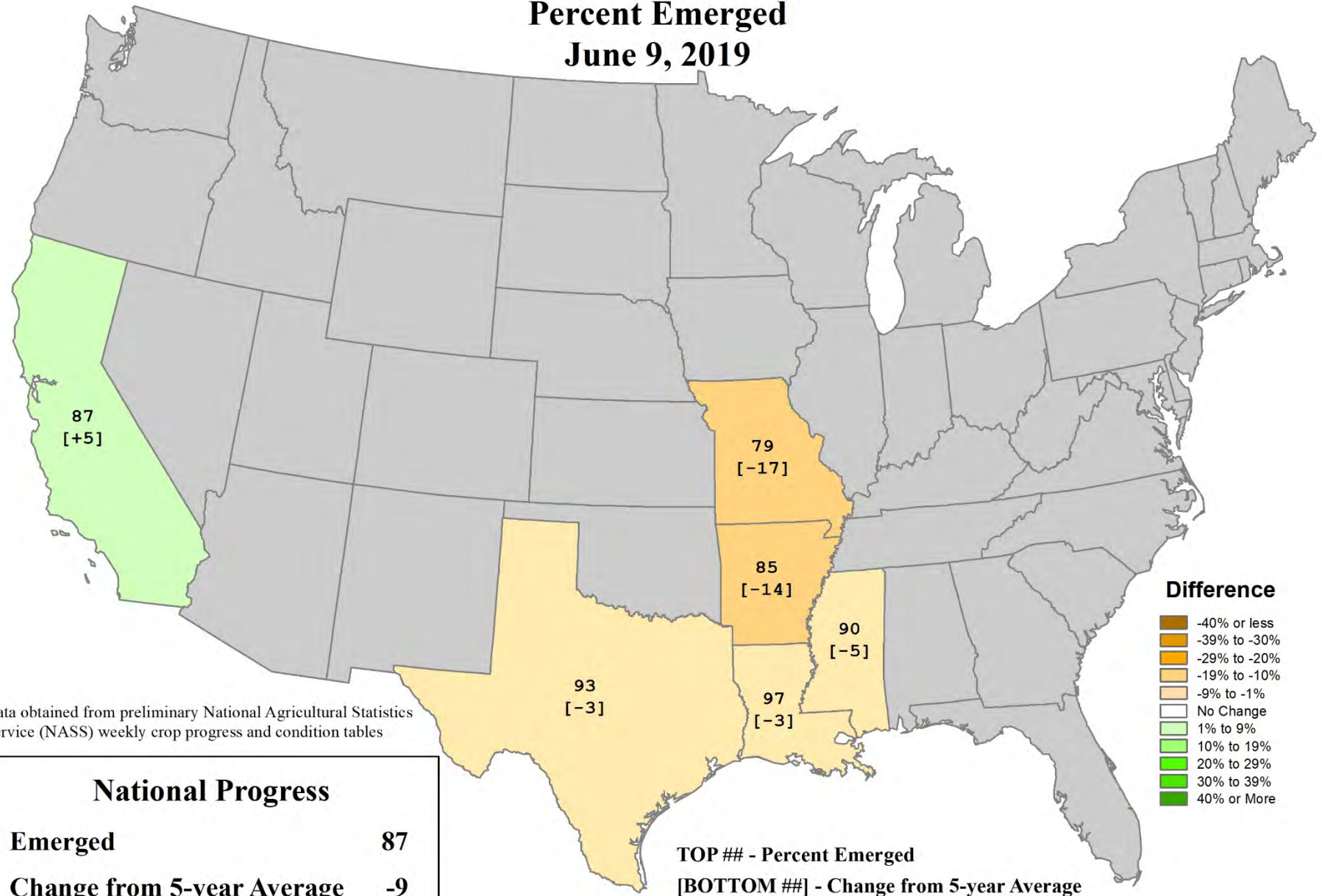
U.S. RICE: Percent Planted



Based on NASS crop progress data.

U.S. Rice Progress

Percent Emerged
June 9, 2019



Data obtained from preliminary National Agricultural Statistics Service (NASS) weekly crop progress and condition tables

National Progress	
Emerged	87
Change from 5-year Average	-9

TOP ## - Percent Emerged
[BOTTOM ##] - Change from 5-year Average

U.S. Rice Supply and Demand

Item	2018/2019		2019/2020		
	Estimate	Change from May 10	Forecast	Change from May 10	Change from 2018/2019
Planted area (million acres)	2.95	--	2.62	-0.25	-0.33
Harvested area (million acres)	2.92	--	2.57	-0.27	-0.35
Yield (pounds per acre)	7,692	--	7,717	20	25
----- <i>Million cwt</i> -----					
Beginning stocks	29.4	--	57.3	3.7	27.9
Production	224.2	--	198.1	-20.1	-26.1
Imports	28.7	0.7	29.2	1.2	0.5
Total supply	282.3	0.7	284.6	-15.2	2.3
Domestic use	135.0	--	133.0	-7.0	-2.0
Exports	90.0	-3.0	100.0	-1.0	10.0
Total use	225.0	-3.0	233.0	-8.0	8.0
Ending stocks	57.3	3.7	51.6	-7.2	-5.7
----- <i>Percent</i> -----					
Stocks to use ratio	25.5	2.0	22.1	-2.3	-3.3
----- <i>Dollars per cwt</i> -----					
Average market price	12.00	--	11.70	0.50	-0.30

-- No change.

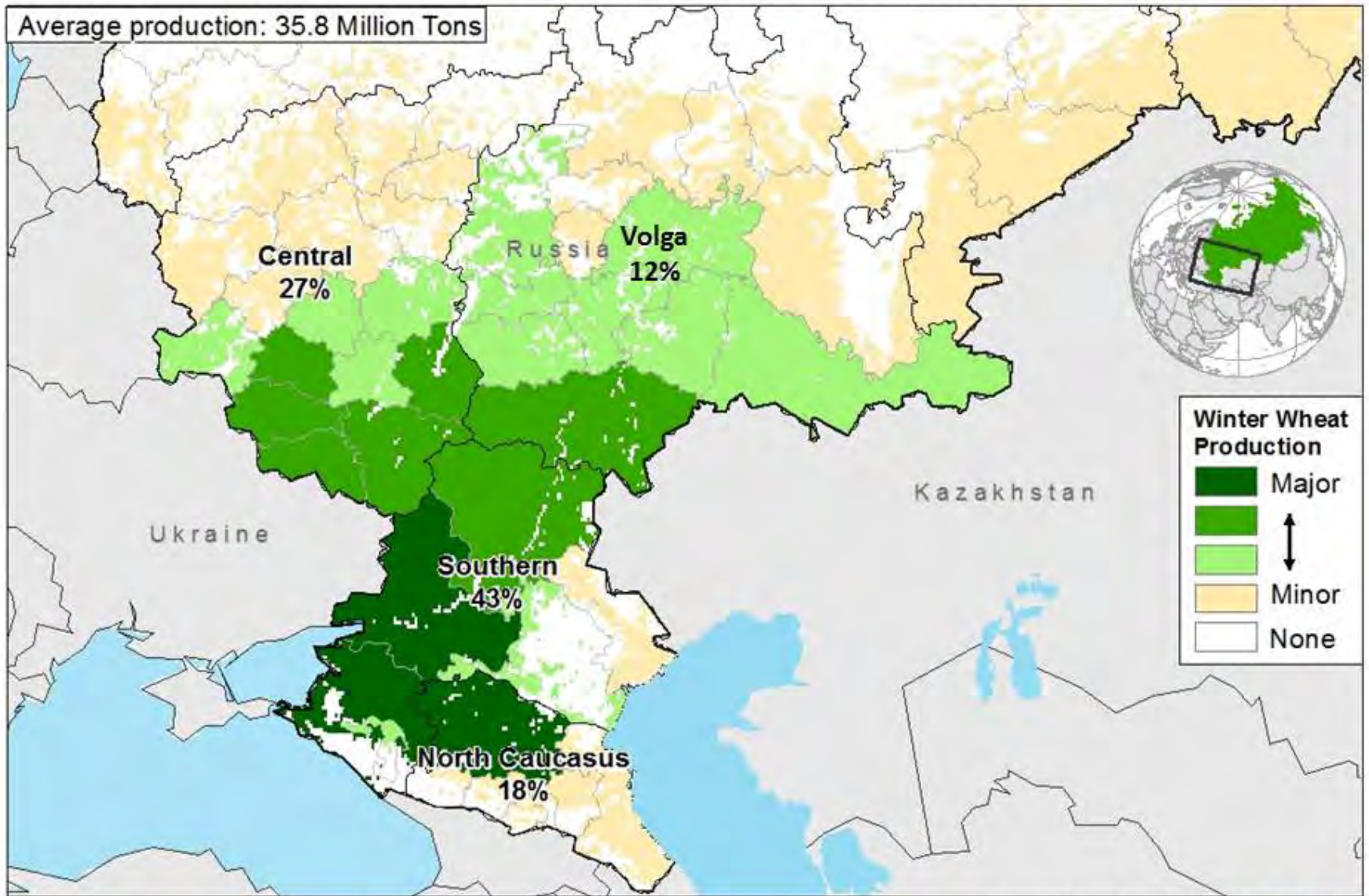
World Wheat Production

Country or Region	2018/2019		2019/2020		
	Estimate	Change from May 10	Forecast	Change from May 10	Change from 2018/2019
----- Million Tons -----					
World	731.7	0.1	780.8	3.3	49.1
United States	51.3	--	51.8	0.2	0.5
Foreign	680.4	0.1	729.0	3.2	48.6
Argentina	19.5	--	20.0	--	0.5
Canada	31.8	--	34.5	--	2.7
Australia	17.3	--	22.5	--	5.2
European Union	137.2	--	153.8	--	16.6
Turkey	19.0	--	21.0	--	2.0
Russia	71.7	--	78.0	1.0	6.3
Ukraine	25.1	--	30.0	1.0	4.9
Kazakhstan	13.9	--	13.8	--	-0.1
China	131.4	--	132.0	--	0.6
India	99.9	0.2	101.2	1.2	1.3
Northwest Africa	12.3	--	9.9	--	-2.5

-- No change.

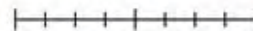
RUSSIA: Winter Wheat Production

Average production: 35.8 Million Tons



Data Source: Rosstat, Average Crop Production 2011-2015; IIASA and FAO (2008)

0 115 230 460 Kilometers



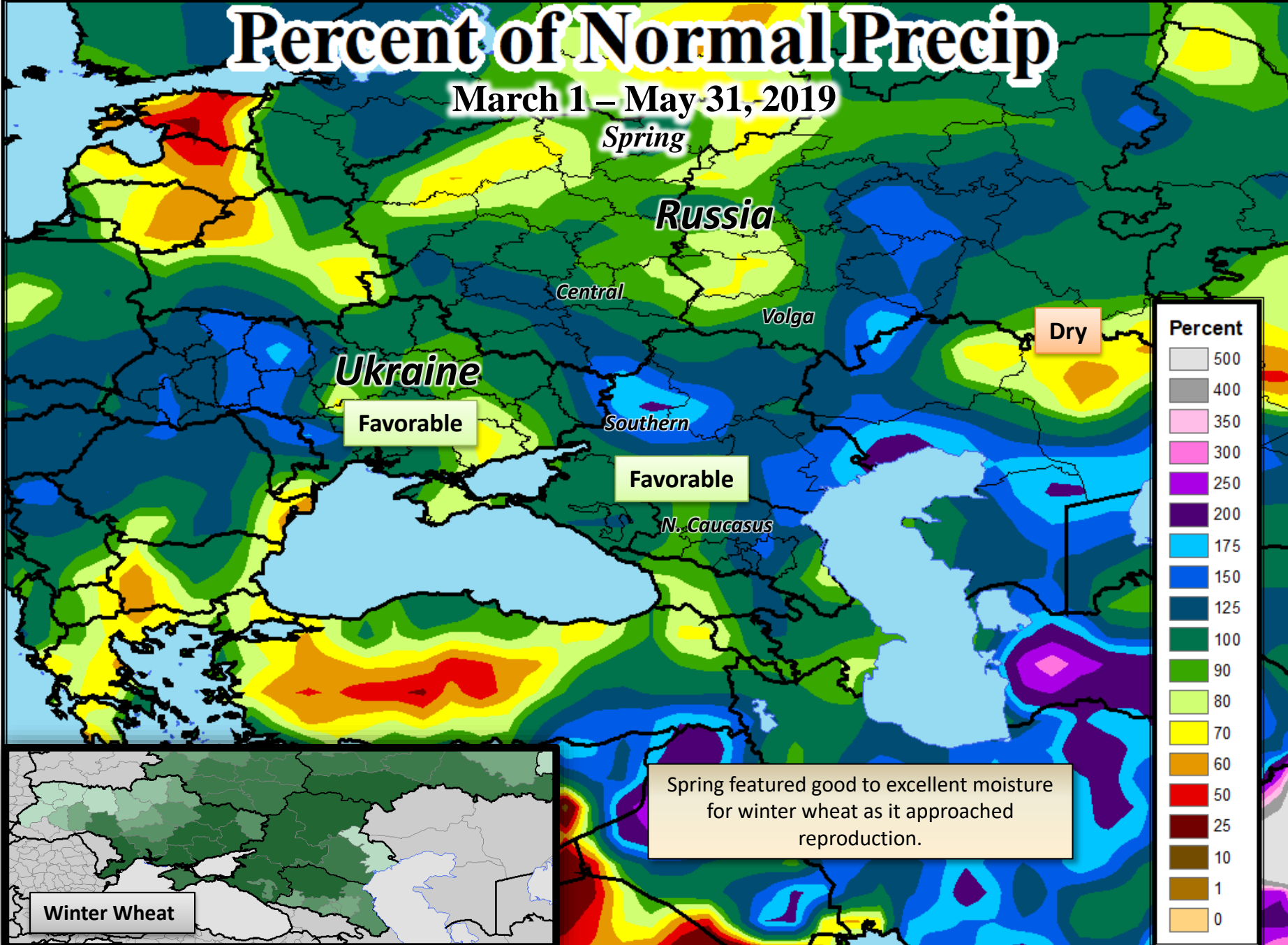
Foreign Agriculture Service
Office of Global Analysis
IPA Division



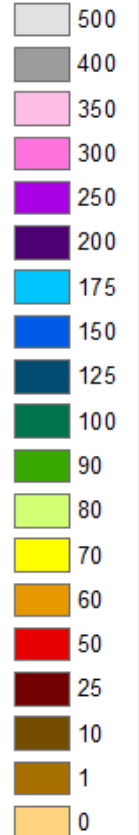
Percent of Normal Precip

March 1 – May 31, 2019

Spring



Percent

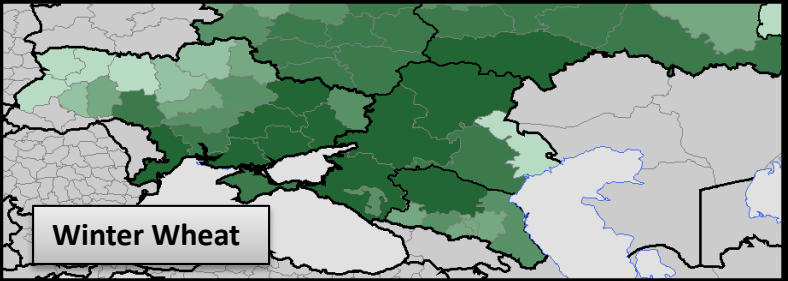


Ukraine
Favorable

Favorable

Dry

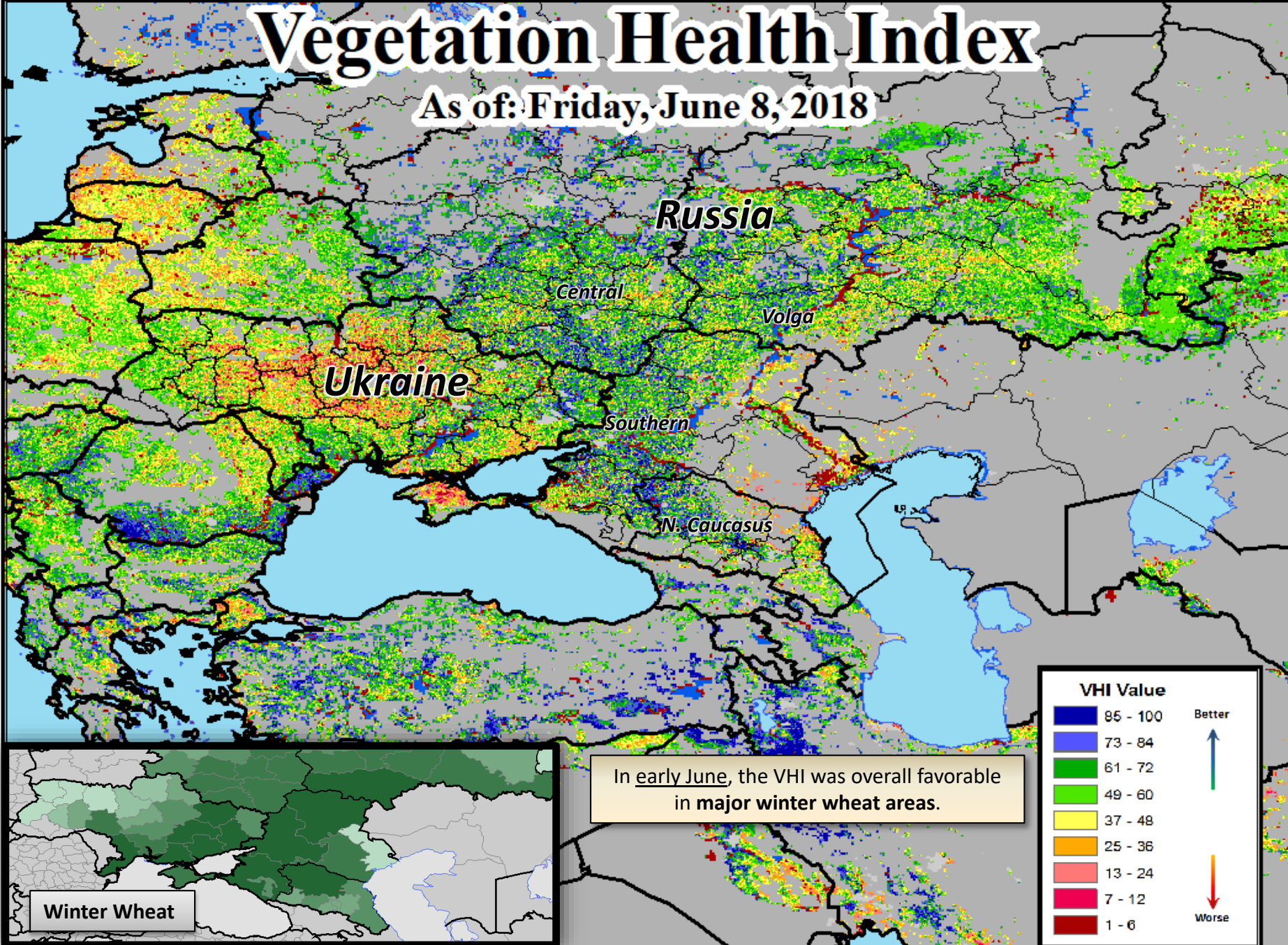
Spring featured good to excellent moisture for winter wheat as it approached reproduction.



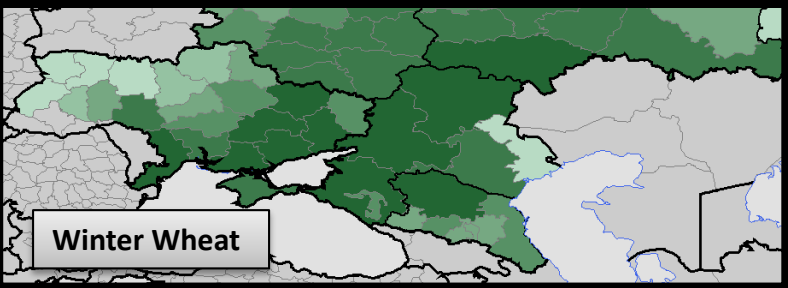
Winter Wheat

Vegetation Health Index

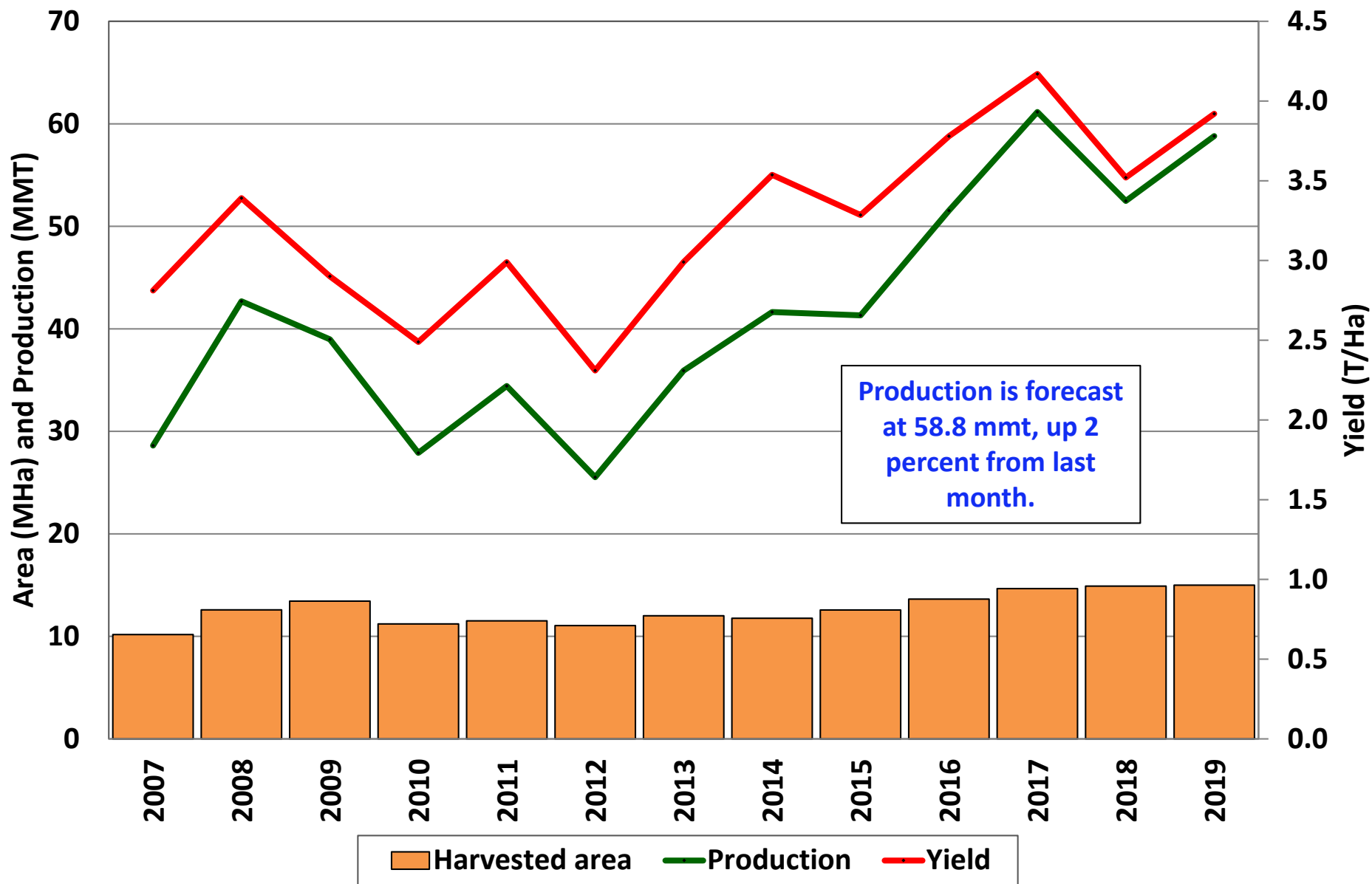
As of: Friday, June 8, 2018



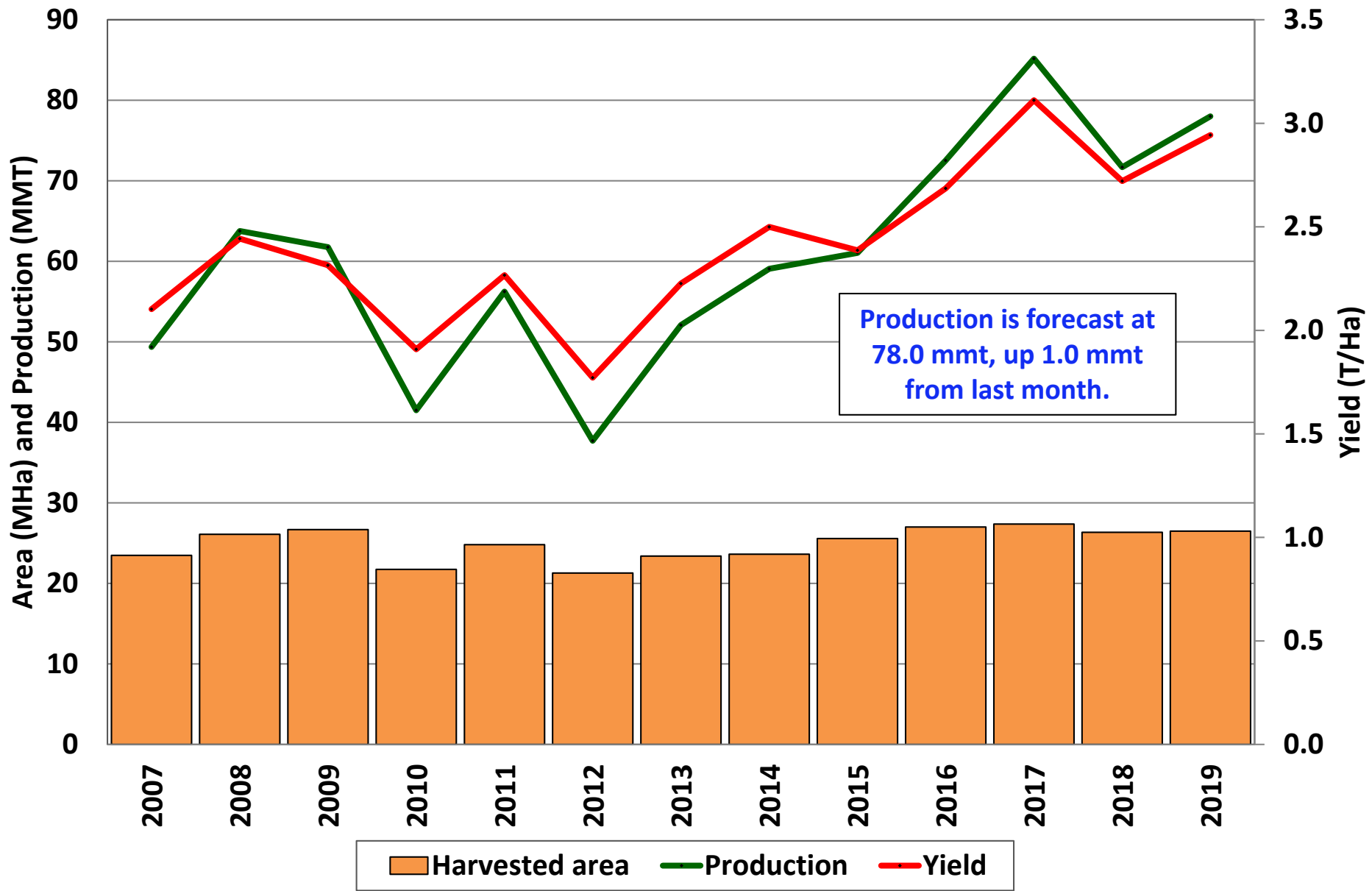
In early June, the VHI was overall favorable in major winter wheat areas.



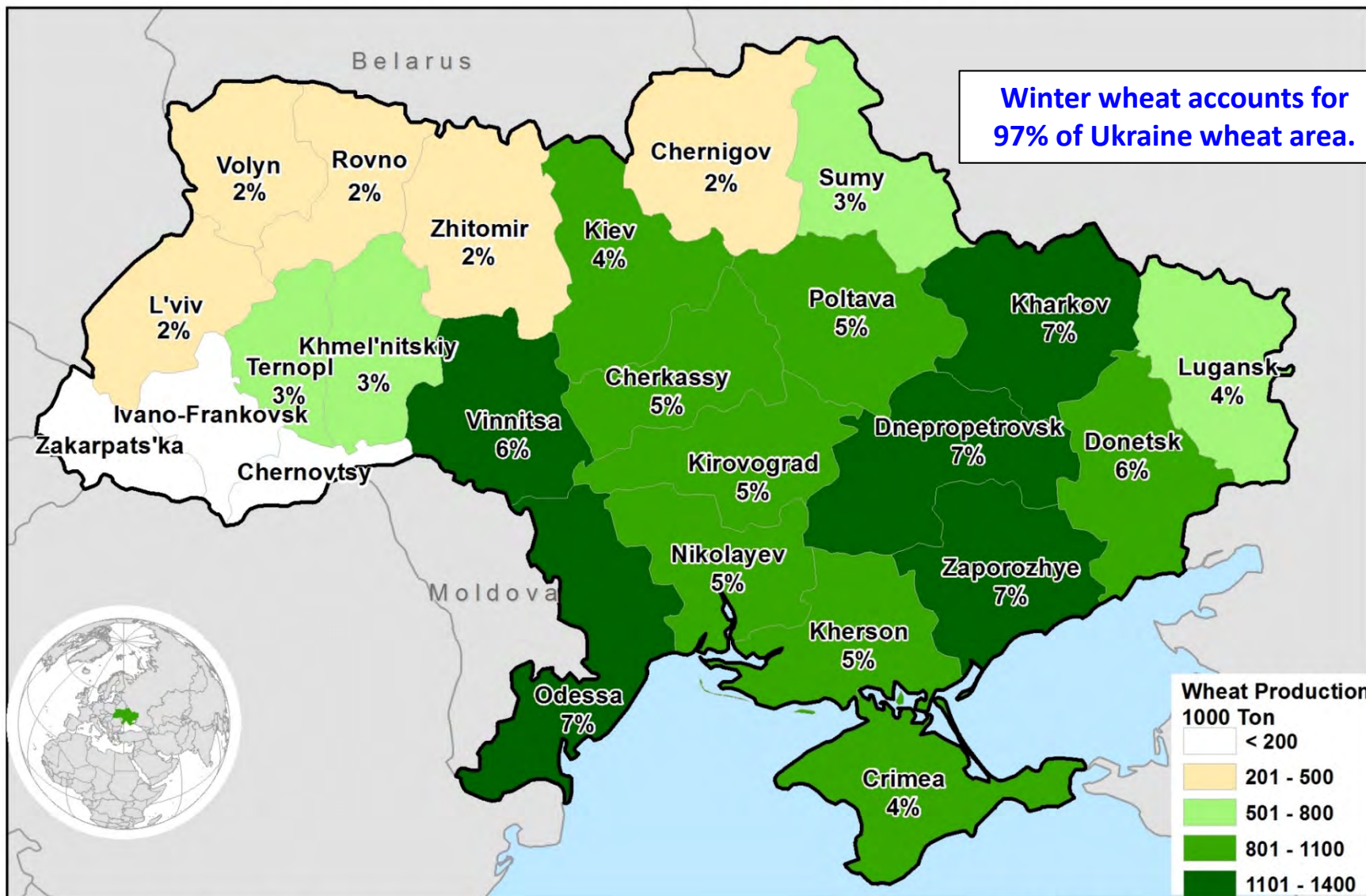
Russia Winter Wheat: Estimated Area, Yield, and Production




Russia Total Wheat: Estimated Area, Yield, and Production



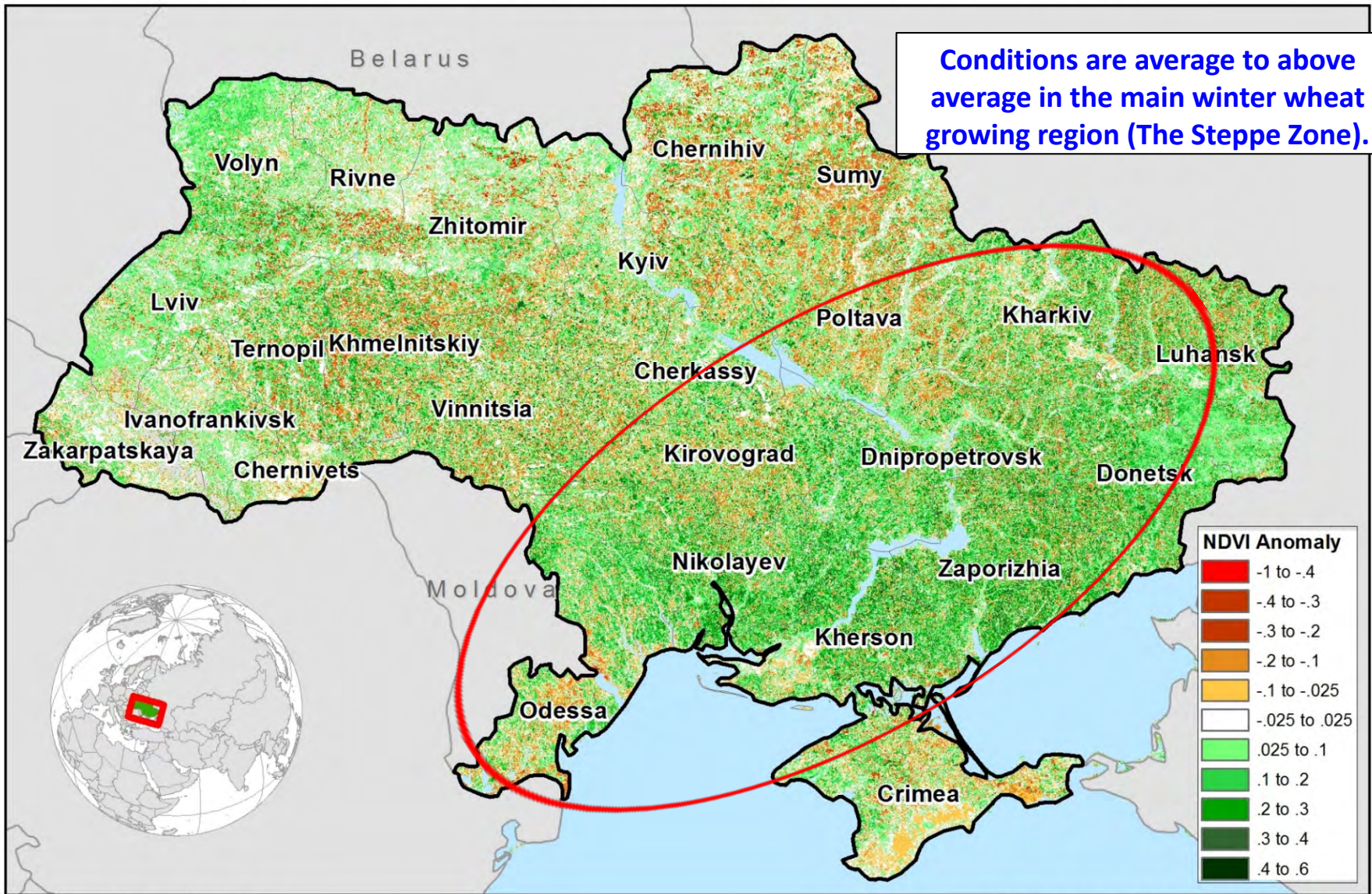
UKRAINE: Wheat Production by Oblast



Data Source: State Statistical Committee of Ukraine
Average Production of 2011-2015

Foreign Agriculture Service
Office of Global Analysis
IPA Division 

UKRAINE: NDVI Anomaly (May 25 - June 1, 2019)

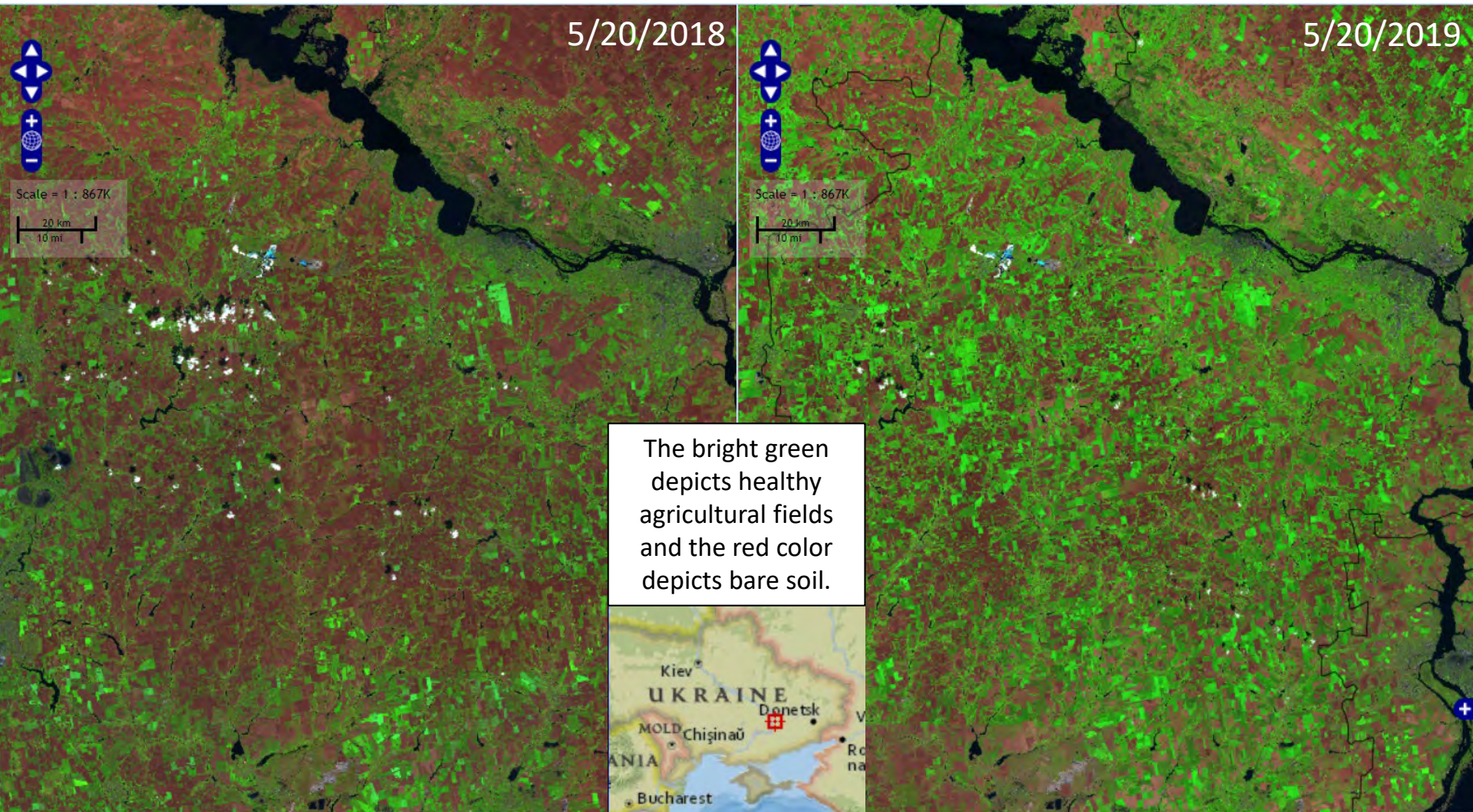


Source: USDA / NASA
Global Agriculture Monitoring Project (GLAM)

Foreign Agriculture Service
Office of Global Analysis
International Production Assessment Division

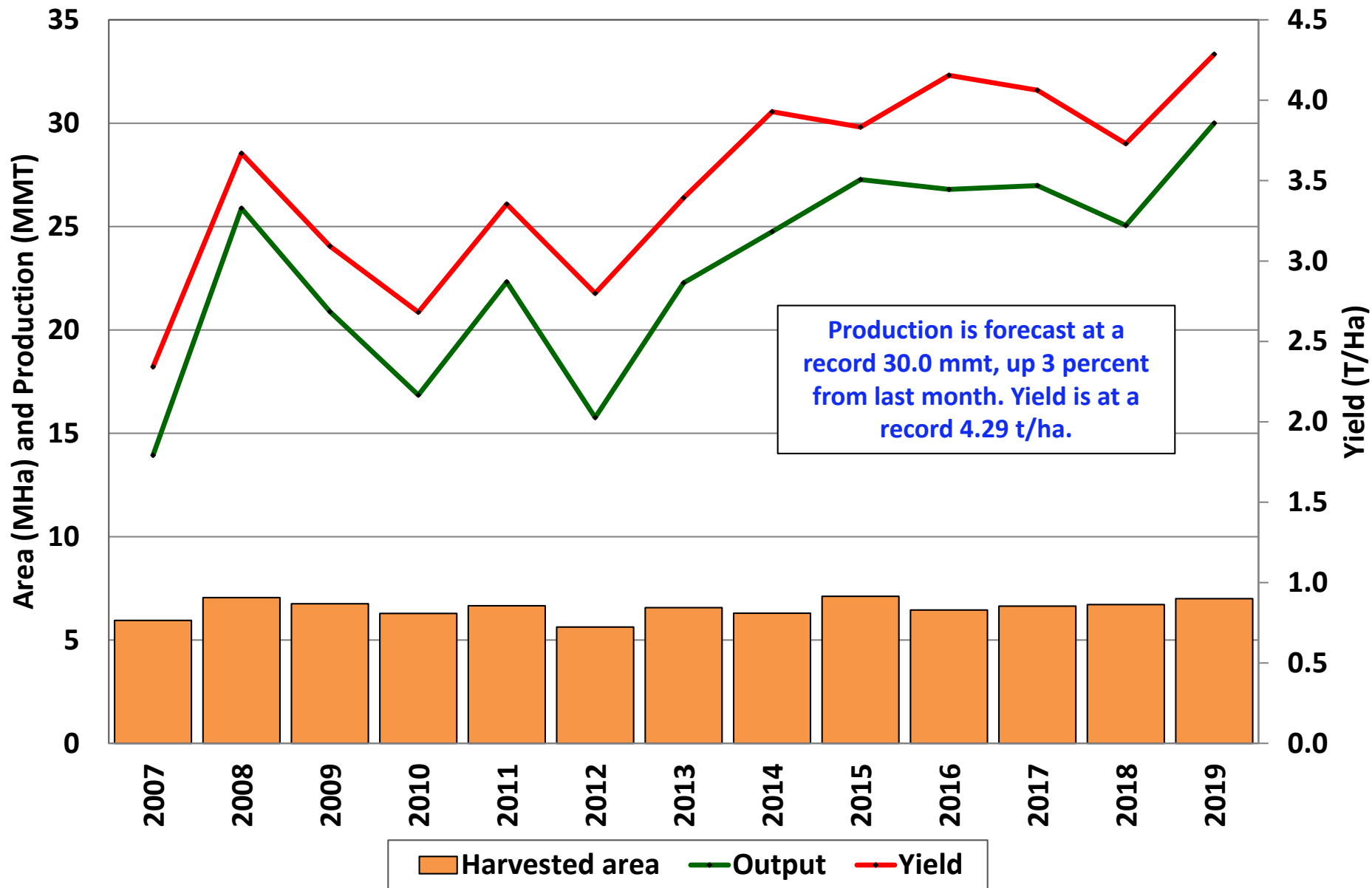


Ukraine: Dnipropetrovsk (Steppe Zone)



Source: USGS Landsat 8 imagery (30m), Band Combination: SWIR1-NIR-Red

Ukraine Wheat: Estimated Area, Yield, and Production



Sources: PSD Online, FAS Forecast (2019)

World Wheat Supply and Use

Item	2018/2019		2019/2020		
	Estimate	Change from May 10	Forecast	Change from May 10	Change from 2018/2019
----- Million Tons -----					
Beginning stocks	280.9	-0.4	276.6	1.6	-4.4
Production	731.7	0.1	780.8	3.3	49.1
Total Supply	1,012.6	-0.2	1,057.4	4.9	44.8
Feed use	139.4	-0.3	152.6	2.3	13.1
Total use	736.1	-1.8	763.1	3.6	27.0
Trade	175.7	-2.3	185.4	0.8	9.7
Ending Stocks	276.6	1.6	294.3	1.3	17.8

U.S. Wheat Supply and Demand

Item	2018/2019		2019/2020		
	Estimate	Change from May 10	Forecast	Change from May 10	Change from 2018/2019
Planted area (million acres)	47.8	--	45.8	--	-2.0
Harvested area (million acres)	39.6	--	39.0	--	-0.6
Yield (bushels per acre)	47.6	--	48.7	0.1	1.2
----- Million bushels -----					
Beginning stocks	1,099	--	1,102	-25	3
Production	1,884	--	1,903	6	18
Imports	140	--	140	--	--
Total supply	3,123	--	3,145	-19	21
Food use	960	--	965	--	5
Seed	62	--	68	--	7
Feed and residual	50	--	140	50	90
Domestic use	1,072	--	1,173	50	102
Exports	950	25	900	--	-50
Total use	2,022	25	2,073	50	52
Ending stocks	1,102	-25	1,072	-69	-30
----- Percent -----					
Stocks to use ratio	54.5	-1.9	51.7	-4.7	-2.8
----- Dollars per bushel -----					
Average market price	5.20	--	5.10	0.40	-0.10

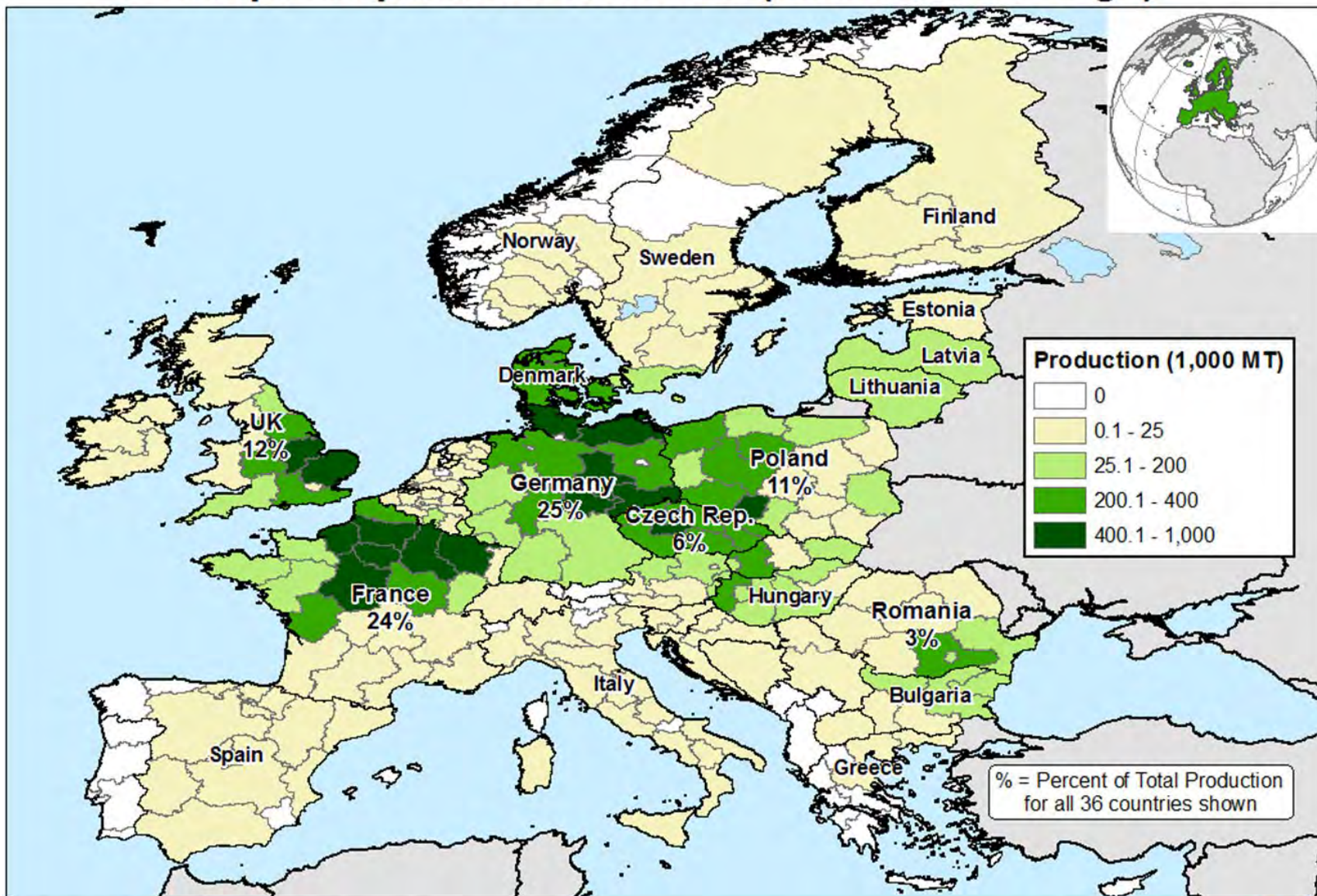
-- No change.

World Soybean Production

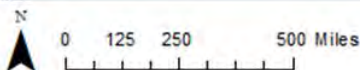
Country or Region	2018/2019 estimate	2019/2020 forecast	Change from May 10	Change from 2018/2019
<i>----- Million Tons -----</i>				
World	362.1	355.4	-0.3	-6.7
United States	123.7	112.9	--	-10.7
Foreign	238.4	242.4	-0.3	4.0
Argentina	56.0	53.0	--	-3.0
Brazil	117.0	123.0	--	6.0
Paraguay	9.0	10.2	--	1.2
Canada	7.3	6.3	--	-1.0
India	11.5	10.9	--	-0.6
China	15.9	17.0	--	1.1

-- No change.

Europe: Rapeseed Production (2010-2014 Average)



Sources: Eurostat, Statistical agencies of Norway, Serbia, and Bosnia and Herzegovina



Foreign Agricultural Service
Office of Global Analysis
International Production Assessment Division

Percent of Normal Precip

September 1 – November 30, 2018

Autumn

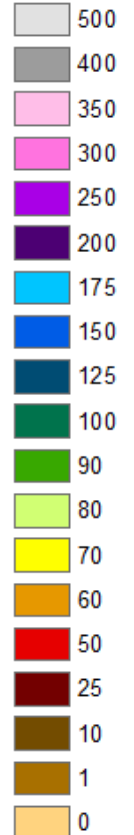
Favorable

Drought

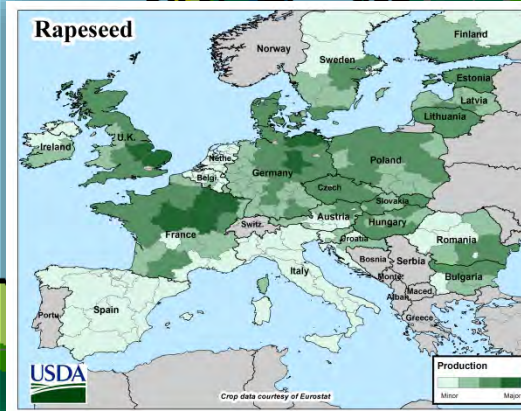
Drought

Autumn drought impacted rapeseed establishment in France, Germany, and northwestern Poland as well as parts of the Balkans,

Percent



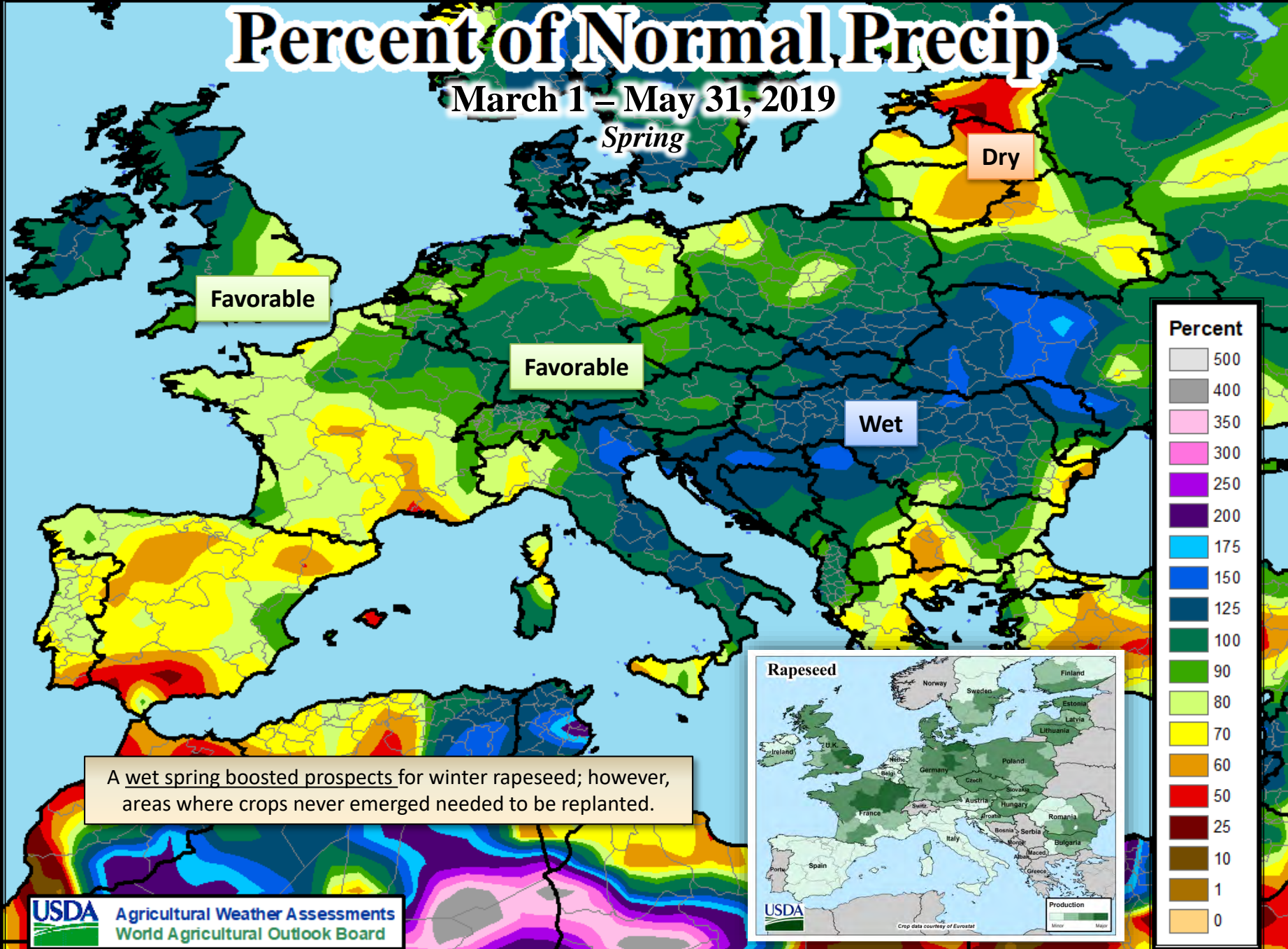
Rapeseed



Percent of Normal Precip

March 1 – May 31, 2019

Spring



A wet spring boosted prospects for winter rapeseed; however, areas where crops never emerged needed to be replanted.

World Soybean Supply and Use

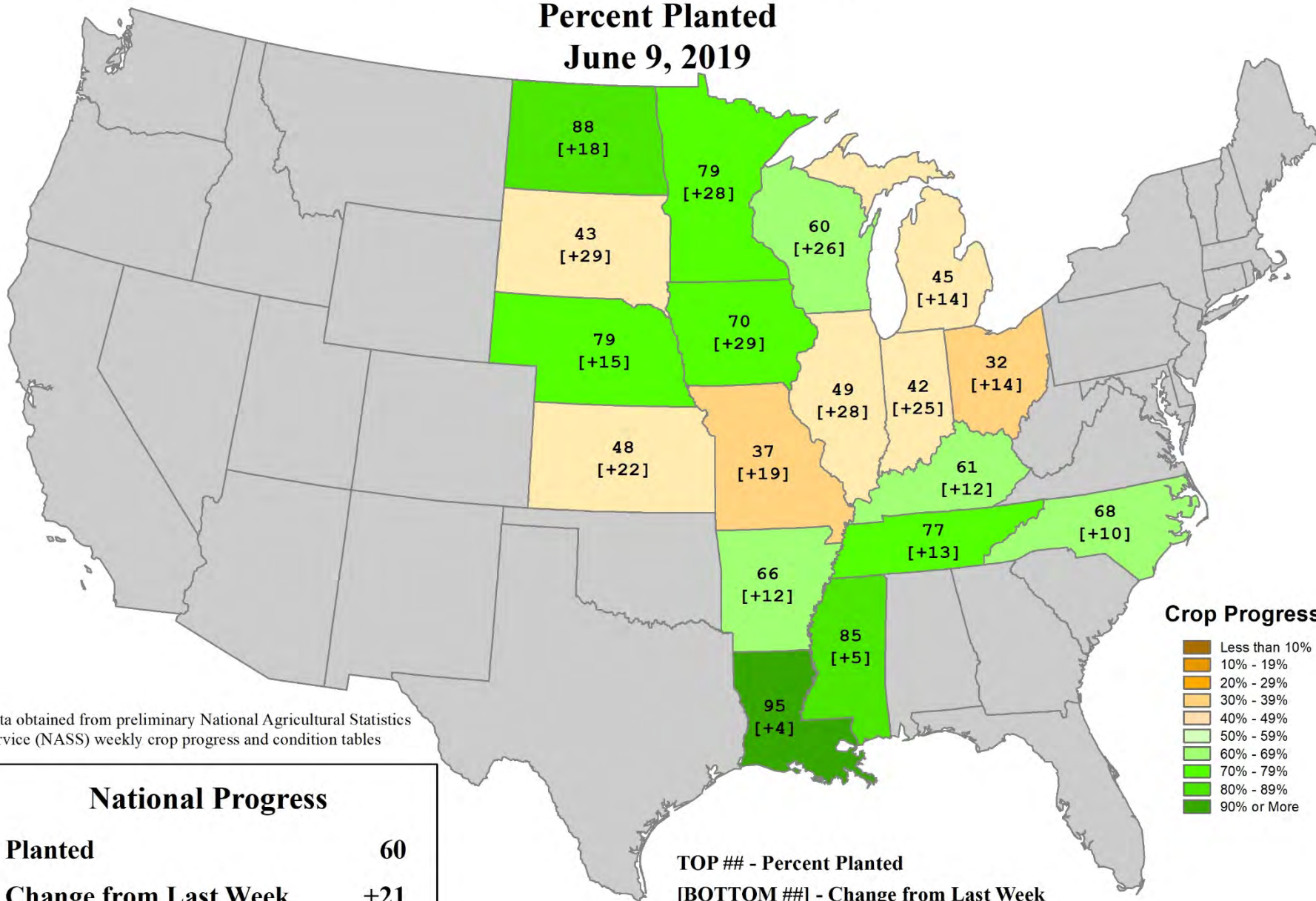
Item	2018/2019		2019/2020		
	Estimate	Change from May 10	Forecast	Change from May 10	Change from 2018/2019
----- Million Tons -----					
Beginning stocks	99.1	--	112.8	-0.4	13.7
Production	362.1	--	355.4	-0.3	-6.7
Total Supply	461.2	--	468.2	-0.7	7.0
Crush	301.6	--	308.1	-0.1	6.5
Total use	347.2	--	355.3	-0.1	8.1
Trade	149.7	-0.6	151.1	-0.1	1.4
Ending Stocks	112.8	-0.4	112.7	-0.4	-0.1
Addendum					
Beginning stocks					
Argentina plus Brazil	56.5	--	55.5	-1.4	-1.0
Imports*					
China	85.0	-1.0	87.0	--	2.0

*From all sources.

-- No change.

U.S. Soybeans Progress

Percent Planted
June 9, 2019



Crop Progress

- Less than 10%
- 10% - 19%
- 20% - 29%
- 30% - 39%
- 40% - 49%
- 50% - 59%
- 60% - 69%
- 70% - 79%
- 80% - 89%
- 90% or More

Data obtained from preliminary National Agricultural Statistics Service (NASS) weekly crop progress and condition tables

National Progress

Planted	60
Change from Last Week	+21

TOP ## - Percent Planted
[BOTTOM ##] - Change from Last Week

U.S. Soybeans Supply and Demand

Item	2018/2019		2019/2020		
	Estimate	Change from May 10	Forecast	Change from May 10	Change from 2018/2019
Planted area (million acres)	89.2	--	84.6	--	-4.6
Harvested area (million acres)	88.1	--	83.8	--	-4.3
Yield (bushels per acre)	51.6	--	49.5	--	-2.1
<i>----- Million bushels -----</i>					
Beginning stocks	438	--	1,070	75	632
Production	4,544	--	4,150	--	-394
Imports	17	--	20	--	3
Total supply	4,999	--	5,240	75	241
Crush	2,100	--	2,115	--	15
Seed and Residual	129	--	130	--	1
Domestic use	2,229	--	2,245	--	16
Exports	1,700	-75	1,950	--	250
Total use	3,929	-75	4,195	--	266
Ending stocks	1,070	75	1,045	75	-25
<i>----- Percent -----</i>					
Stocks to use ratio	27.2	2.4	24.9	1.8	-2.3
<i>----- Dollars per bushel -----</i>					
Average market price	8.50	-0.05	8.25	0.15	-0.25

-- No change.

World Cotton Production

Country or Region	2018/2019		2019/2020		
	Estimate	Change from May 10	Forecast	Change from May 10	Change from 2018/2019
----- Million bales -----					
World	118.9	0.4	125.3	-0.1	6.4
United States	18.4	--	22.0	--	3.6
Foreign	100.5	0.4	103.3	-0.1	2.8
Argentina	1.1	**	1.1	-0.1	-0.1
Brazil	12.8	--	12.0	--	-0.8
Turkey	3.7	--	4.1	--	0.4
Australia	2.4	-0.1	1.9	-0.3	-0.5
China	27.8	--	27.8	--	--
India	26.0	0.5	28.5	--	2.5
Pakistan	7.7	--	8.0	--	0.3
Uzbekistan	3.3	--	3.3	0.1	-0.1
Turkmenistan	0.9	--	1.2	**	0.3
African Franc Zone	5.4	--	6.0	--	0.6

-- No change. ** Rounds to zero.

World Cotton Supply and Demand

Item	2018/2019		2019/2020		
	Estimate	Change from May 10	Forecast	Change from May 10	Change from 2018/2019
----- Million bales -----					
Beginning stocks	80.9	-0.1	77.5	1.1	-3.4
Production	118.9	0.4	125.3	-0.1	6.4
Total Supply	199.8	0.3	202.8	0.9	3.0
Consumption	122.3	-0.4	125.3	-0.7	3.0
Trade	42.1	0.1	44.8	-0.6	2.7
Ending Stocks	77.5	1.1	77.3	1.6	-0.3
Addendum					
China ending stocks	34.4	0.8	31.5	0.8	-2.9

U.S. Cotton Supply and Demand

Item	2018/2019		2019/2020		
	Estimate	Change from May 10	Forecast	Change from May 10	Change from 2018/2019
Planted area (million acres)	14.10	--	13.78	--	-0.32
Harvested area (million acres)	10.21	--	12.54	--	2.34
Yield (pounds per acre)	864	--	842	--	-22
<i>----- Million bales -----</i>					
Beginning stocks	4.30	--	4.65	--	0.35
Production	18.37	--	22.00	--	3.63
Imports	0.01	--	0.01	--	--
Total supply	22.67	--	26.66	--	3.98
Mill use	3.10	--	3.10	--	--
Exports	14.75	--	17.00	--	2.25
Total use	17.85	--	20.10	--	2.25
Unaccounted	0.17	--	0.16	--	-0.02
Ending stocks	4.65	--	6.40	--	1.75
<i>----- Percent -----</i>					
Stocks to use ratio	26.1	--	31.8	--	5.8
<i>----- Cents per pound -----</i>					
Average market price	70.00	--	64.00	-1.00	-6.00

-- No change.

U.S. Sugar Supply and Demand

Item	2018/2019		2019/2020		
	Estimate	Change from May 10	Forecast	Change from May 10	Change from 2018/2019
<i>----- Thousand short tons, raw value -----</i>					
Beginning Stocks	2,008	--	1,526	20	-482
Production	8,948	**	9,138	23	191
Beets	4,920	10	5,154	40	234
Cane	4,028	-9	3,985	-16	-43
Imports	2,875	20	3,219	--	344
TRQ	1,538	--	1,381	--	-157
Re-export	350	--	350	--	--
Mexico	897	--	1,418	--	521
High-tier	90	20	70	--	-20
Total Supply	13,831	20	13,883	44	52
Exports	35	--	35	--	--
Domestic deliveries	12,270	--	12,320	--	50
Total use	12,305	--	12,355	--	50
Ending stocks	1,526	20	1,528	44	2
<i>----- Percent -----</i>					
Stocks/use ratio	12.4	0.2	12.4	0.4	**

-- No change. ** Rounds to zero.

Mexico Sugar Supply and Demand

Item	2018/2019		2019/2020		
	Estimate	Change from May 10	Forecast	Change from May 10	Change from 2018/2019
----- Thousand metric tons -----					
Beginning Stocks	1,395	--	995	**	-399
Production	6,400	200	6,183	83	-217
Imports	70	--	70	--	0
Total Supply	7,864	200	7,248	83	-617
Domestic Use	4,716	--	4,776	--	60
Exports	2,153	199	1,476	83	-677
Total use	6,869	199	6,253	83	-617
Ending stocks	995	**	995	**	0

-- No change. ** Rounds to zero.

U.S. Meat Production and Prices

Item	2019		2020		
	Forecast	Change from May 10	Forecast	Change from May 10	Change from 2019
Production	----- <i>Billion Pounds</i> -----				
Beef	27.20	-0.07	27.42	-0.09	0.22
Pork	27.29	-0.04	28.23	-0.06	0.94
Broilers	43.03	0.04	43.35	-0.20	0.32
Turkey	5.88	**	5.90	-0.04	0.02
Total Meat	104.17	-0.06	105.67	-0.39	1.50
Prices	----- <i>Dollars per cwt</i> -----				
Steers	116.82	-1.50	118.75	-2.00	1.93
Hogs	53.67	-1.00	60.25	--	6.58
	----- <i>Cents per pound</i> -----				
Broilers	90.0	-3.0	94.0	-3.0	4.0
Turkey	86.0	0.3	88.3	--	2.3

-- No change. ** Rounds to zero.

U.S. Meat Trade

Million Pounds

Item	2019		2020		
	Forecast	Change from May 10	Forecast	Change from May 10	Change from 2019
<i>----- Exports -----</i>					
Beef	3,161	-10	3,245	--	84
Pork	6,466	220	6,945	270	480
Broilers	7,087	-20	7,250	--	163
Turkey	612	--	630	--	18
Mature chickens	70	--	72	--	2
Total Meat	17,402	190	18,149	270	747
<i>----- Imports -----</i>					
Beef	3,038	25	2,960	--	-78

-- No change.

U.S. Milk Supply and Demand

Item	2019		2020		
	Forecast	Change from May 10	Forecast	Change from May 10	Change from 2019
----- <i>Billion pounds</i> -----					
Production	218.2	-0.5	221.9	-0.8	3.7
Fat Basis					
Imports	6.5	**	6.6	--	0.1
Commercial use	214.5	-0.2	217.1	-0.7	2.6
Exports	9.7	-0.5	10.4	**	0.7
Skim-solid Basis					
Imports	5.4	0.3	5.0	--	-0.4
Commercial use	180.8	0.3	182.6	-0.5	1.8
Exports	42.0	-0.5	43.4	-0.2	1.4

-- No change. ** Rounds to zero.

U.S. Dairy Product Prices

Item	2019		2020		
	Forecast	Change from May 10	Forecast	Change from May 10	Change from 2019
Product prices					
<i>----- Dollars per pound -----</i>					
Cheese	1.64	-0.01	1.73	0.02	0.09
Butter	2.32	0.03	2.37	0.01	0.04
Nonfat dry milk	1.02	0.01	1.05	**	0.03
Dry whey	0.39	**	0.38	-0.01	-0.01
Class prices					
<i>----- Dollars per cwt -----</i>					
Class III	15.90	-0.15	16.65	0.10	0.75
Class IV	16.40	0.20	16.85	0.05	0.45
All milk	18.00	-0.05	18.90	0.10	0.90

** Rounds to zero.

U.S. Production Summary

Item	2018/2019		2019/2020		
	Estimate	Change from May 10	Forecast	Change from May 10	Change from 2018/2019
<i>Crops and Products</i>					
Wheat (million bushels)	1,884	--	1,903	6	18
Rice (million cwt)	224.2	--	198.1	-20.1	-26.1
Corn (million bushels)	14,420	--	13,680	-1350	-740
Sorghum (million bushels)	365	--	310	--	-55
Barley (million bushels)	153	--	157	--	4
Oats (million bushels)	56	--	60	--	4
Soybeans (million bushels)	4,544	--	4,150	--	-394
Soybean oil (million pounds)	24,505	-65	24,535	--	30
Soybean meal (thousand s.t.)	49,145	50	49,650	-150	505
Cotton (million bales)	18.37	--	22.00	--	3.63
Sugar (thousand s.t., raw value)	8,948	**	9,138	23	191
<i>Milk (billion pounds)</i>	218.2	-0.5	221.9	-0.8	3.7
<i>Meat (billion pounds)</i>					
Beef	27.20	-0.07	27.42	-0.09	0.22
Pork	27.29	-0.04	28.23	-0.06	0.94
Broilers	43.03	0.04	43.35	-0.20	0.32
Turkey	5.88	**	5.90	-0.04	0.02
Total Meat	104.17	-0.06	105.67	-0.39	1.50

-- No change. ** Rounds to zero.

U.S. Domestic Consumption Summary

Item	2018/2019		2019/2020		
	Estimate	Change from May 10	Forecast	Change from May 10	Change from 2018/2019
<i>Crops and Products</i>					
Wheat (million bushels)	1,072	--	1,173	50	102
Rice (million cwt)	135.0	--	133.0	-7.0	-2.0
Corn (million bushels)	12,200	--	12,100	-300	-100
Sorghum (million bushels)	255	--	225	--	-30
Barley (million bushels)	160	--	163	--	3
Oats (million bushels)	147	--	158	--	11
Soybeans (million bushels)	2,229	--	2,245	--	16
Soybean oil (million pounds)	22,800	-150	23,600	--	800
Soybean meal (thousand s.t.)	35,950	--	36,600	--	650
Cotton (million bales)	3.10	--	3.10	--	--
Sugar (thousand s.t., raw value)	12,270	--	12,320	--	50
<i>Milk (billion pounds, fat basis)</i>	214.5	-0.2	217.1	-0.7	2.6
<i>Meat (Billion pounds)</i>					
Beef	27.14	-0.02	27.20	-0.11	0.06
Pork	21.83	-0.29	22.23	-0.34	0.40
Broilers	35.62	0.06	35.77	-0.20	0.15
Turkey	5.29	**	5.28	-0.05	-0.01
Total Meat	90.85	-0.23	91.46	-0.69	0.61

-- No change. ** Rounds to zero.

U.S. Export Summary

Item	2018/2019		2019/2020		
	Estimate	Change from May 10	Forecast	Change from May 10	Change from 2018/2019
<i>Crops and Products</i>					
Wheat (million bushels)	950	25	900	--	-50
Rice (million cwt)	90.0	-3.0	100.0	-1.0	10.0
Corn (million bushels)	2,200	-100	2,150	-125	-50
Sorghum (million bushels)	85	--	100	--	15
Soybeans (million bushels)	1,700	-75	1,950	--	250
Soybean oil (million pounds)	2,150	--	1,800	--	-350
Soybean meal (thousand s.t.)	14,000	250	13,600	--	-400
Cotton (million bales)	14.75	--	17.00	--	2.25
Meat (Million lbs)					
Beef	3,161	-10	3,245	--	84
Pork	6,466	220	6,945	270	480
Broilers	7,087	-20	7,250	--	163
Turkey	612	--	630	--	18
Mature Chickens	70	--	72	--	2
Total Meat	17,402	190	18,149	270	747

-- No change.

Price Summary

Item	2018/2019		2019/2020		
	Estimate	Change from May 10	Forecast	Change from May 10	Change from 2018/2019
<i>Crops and products</i>					
Wheat (\$/bu)	5.20	--	5.10	0.40	-0.10
Rice (\$/cwt)	12.00	--	11.70	0.50	-0.30
Corn (\$/bu)	3.60	0.10	3.80	0.50	0.20
Soybeans (\$/bu)	8.50	-0.05	8.25	0.15	-0.25
Soybean oil (¢/lb)	28.00	--	29.50	--	1.50
Soybean meal (\$/s.t.)	305	--	295	5	-10
Cotton (¢/lb)	70.00	--	64.00	-1.00	-6.00
<i>Livestock</i>					
Steers (\$/cwt)	116.82	-1.50	118.75	-2.00	1.93
Hogs (\$/cwt)	53.67	-1.00	60.25	--	6.58
Broilers (¢/lb)	90.0	-3.0	94.0	-3.0	4.0
Turkeys (¢/lb)	86.0	0.3	88.3	--	2.3
<i>Dairy products</i>					
Cheese (\$/lb)	1.64	-0.01	1.73	0.02	0.09
Butter (\$/lb)	2.32	0.03	2.37	0.01	0.04
Nonfat dry milk (\$/lb)	1.02	0.01	1.05	**	0.03
Dry whey (\$/lb)	0.39	**	0.38	-0.01	-0.01
<i>Milk classes</i>					
Class III (\$/cwt)	15.90	-0.15	16.65	0.10	0.75
Class IV (\$/cwt)	16.40	0.20	16.85	0.05	0.45
All milk (\$/cwt)	18.00	-0.05	18.90	0.10	0.90

-- No change. ** Rounds to zero.